



ALEX ORIGINAL

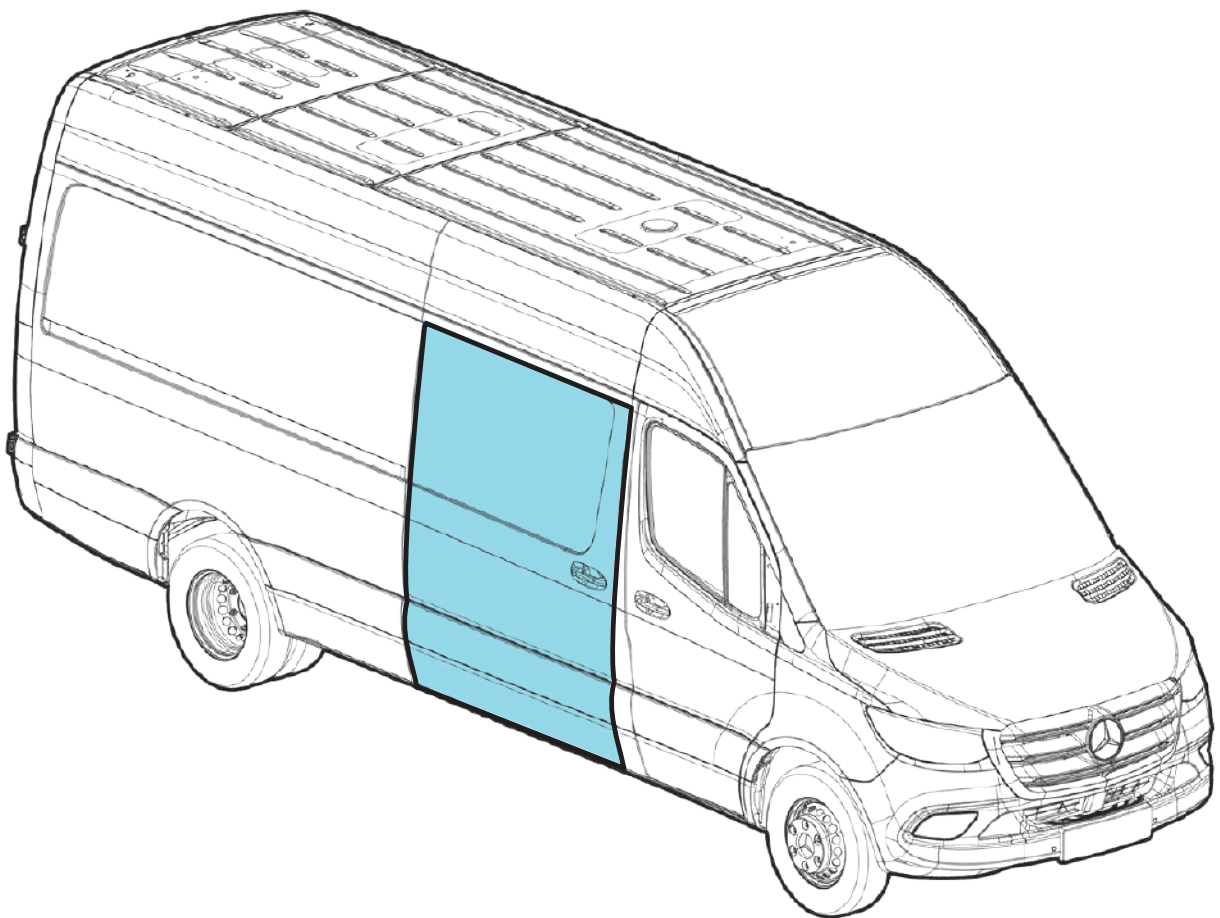
(ESD) ELECTRIC SLIDING DOOR

**MERCEDES SPRINTER 907, 910
FROM 2018**

(Operated either via vehicle's original remote's key,
or the original handle of the sliding door)

P.N.7486-1373

* VSS OPTION 1740-001
(NOT INCLUDED)



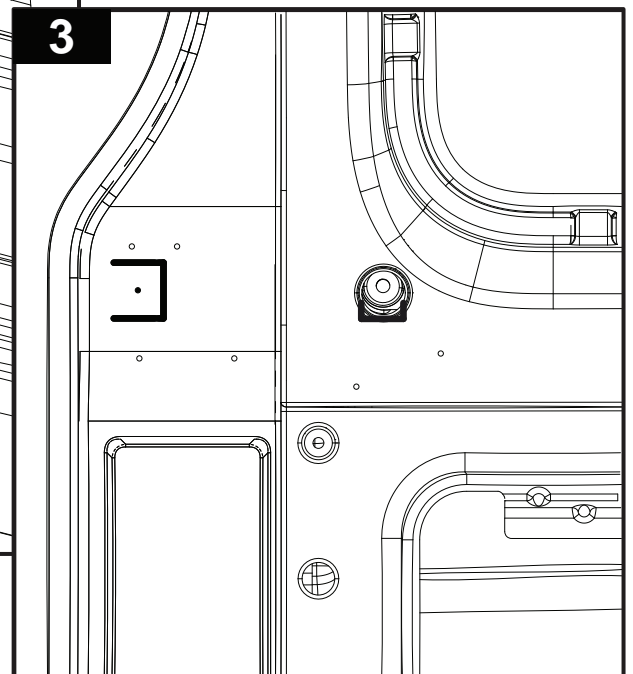
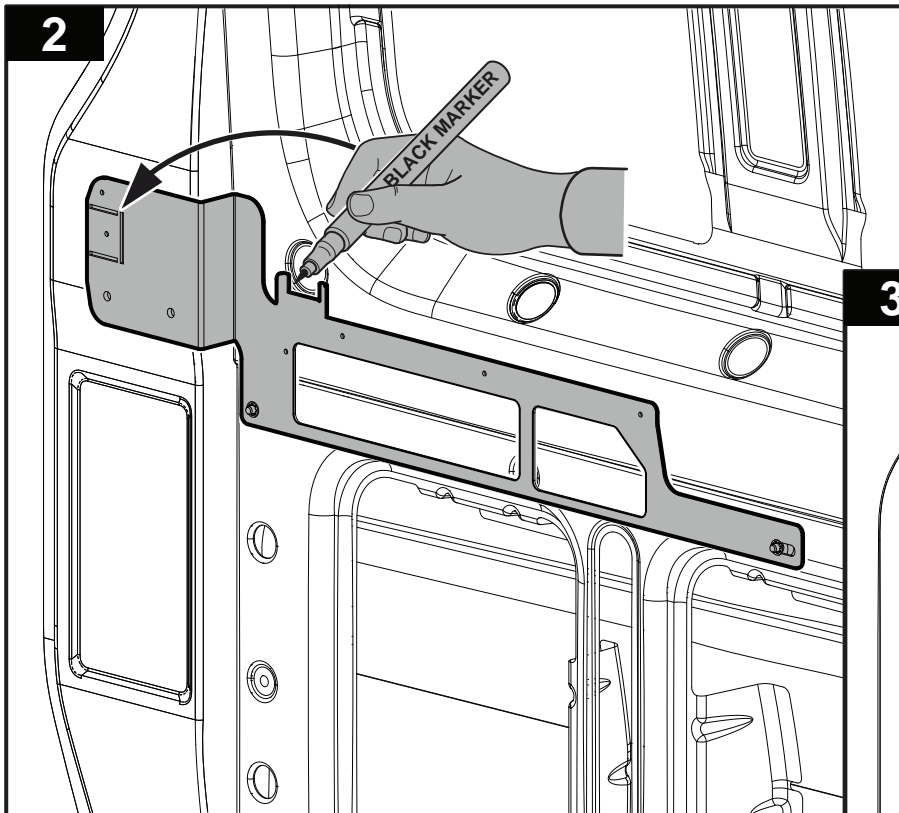
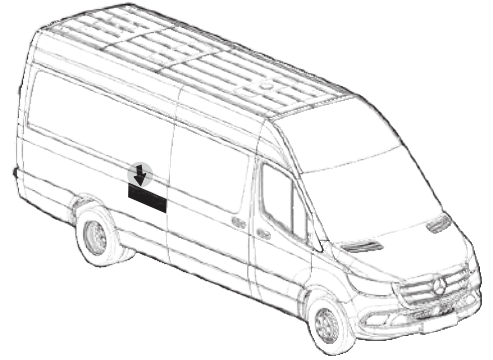
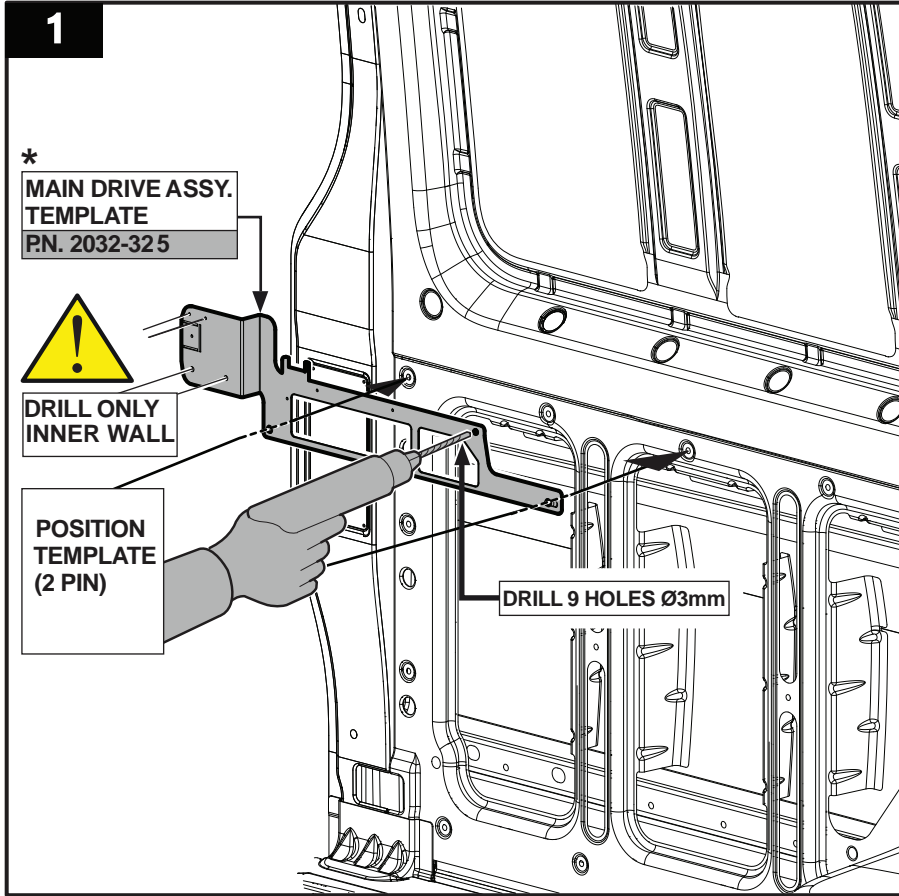
DUE TO UNANNOUNCED CHANGES IN THE VEHICLES, BEFORE ORDERING,
KINDLY VERIFY THAT THE INSTALLATION DRAWINGS AND COMPONENTS ARE COMPATIBLE WITH THE SPECIFIC VEHICLE.
ALEX ORIGINAL RESERVE THE RIGHT TO MAKE CHANGES IN ITS PRODUCTS WITHOUT ADVANCED NOTICE.

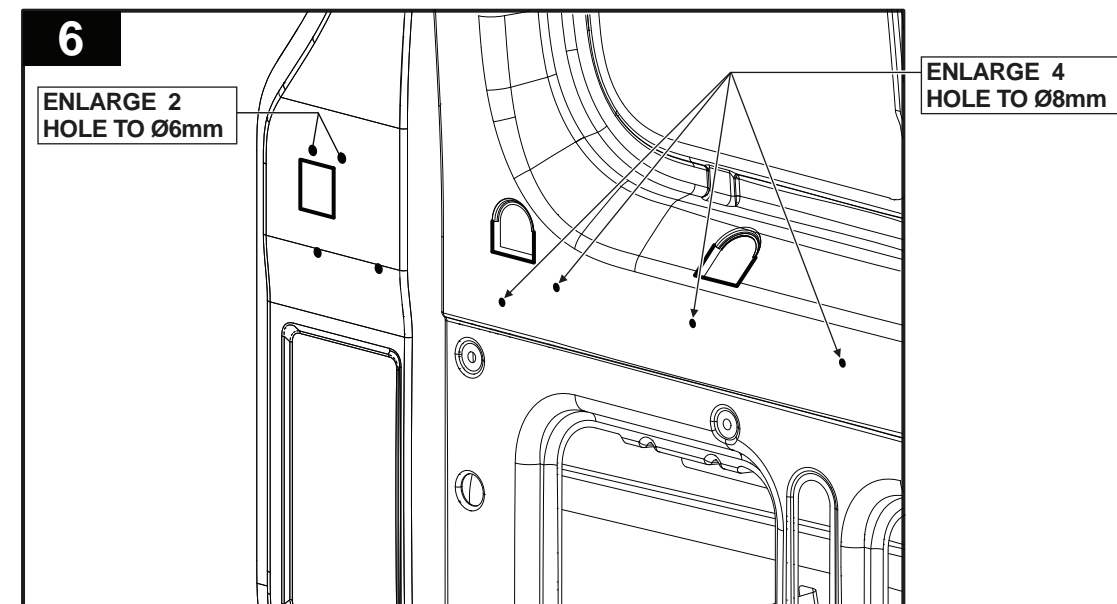
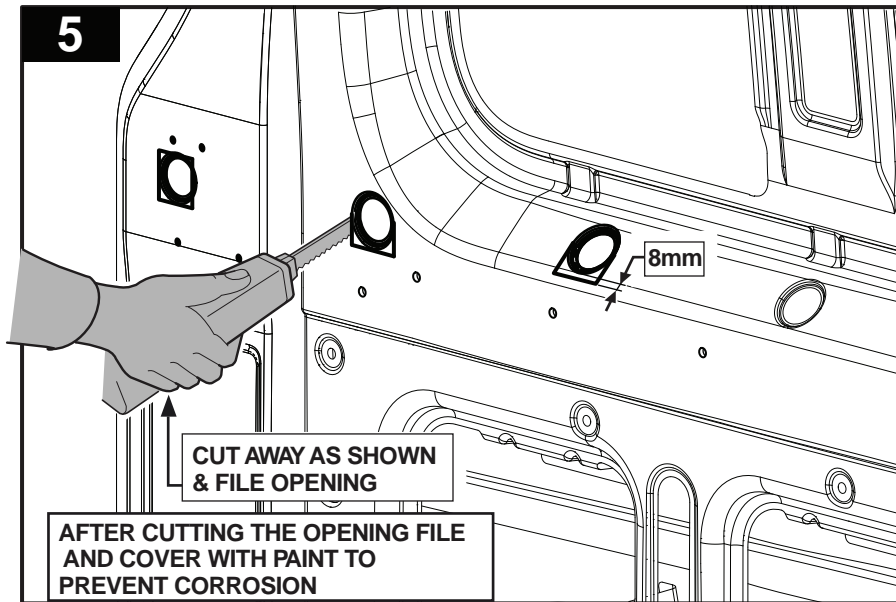
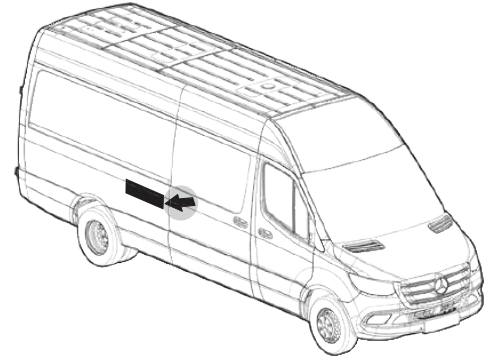
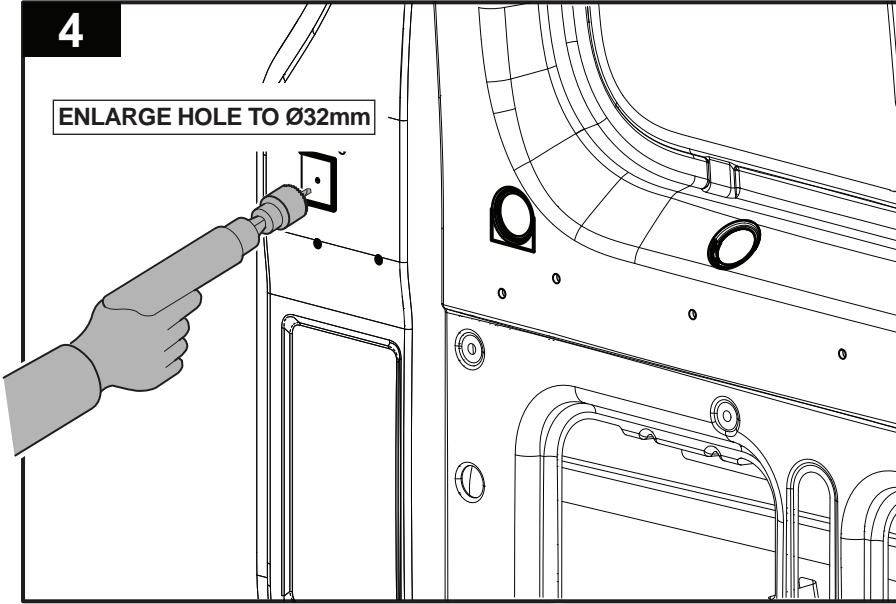


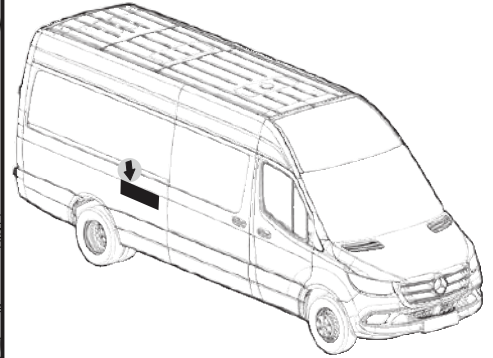
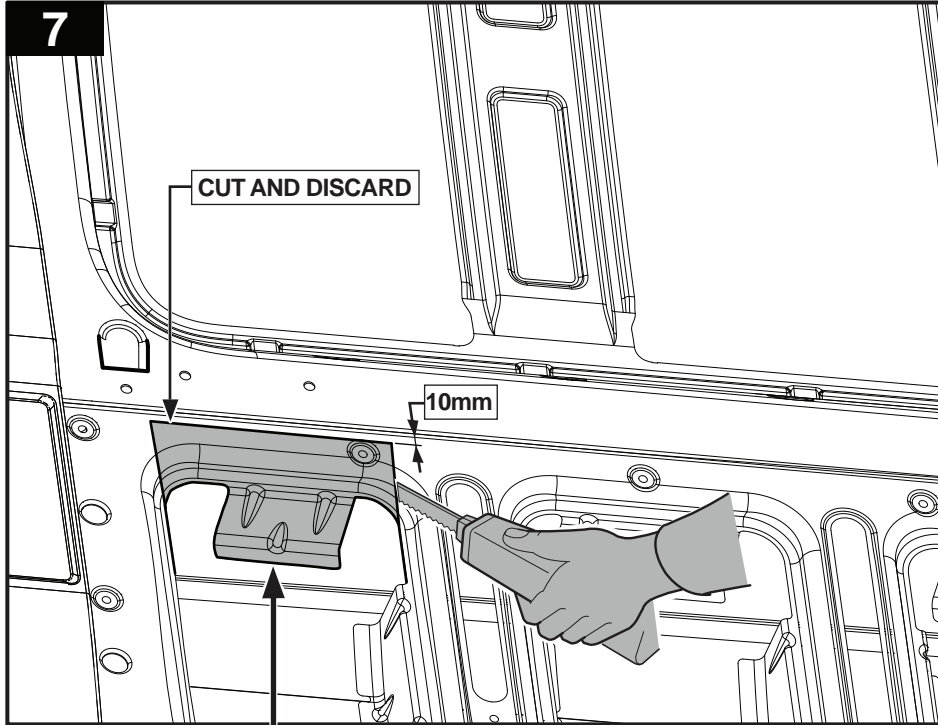
REQUIRED TOOLS

 4mm 5mm 6mm
 1/4" 8mm 10mm
 3/8" 15mm CR MV M10 30 45

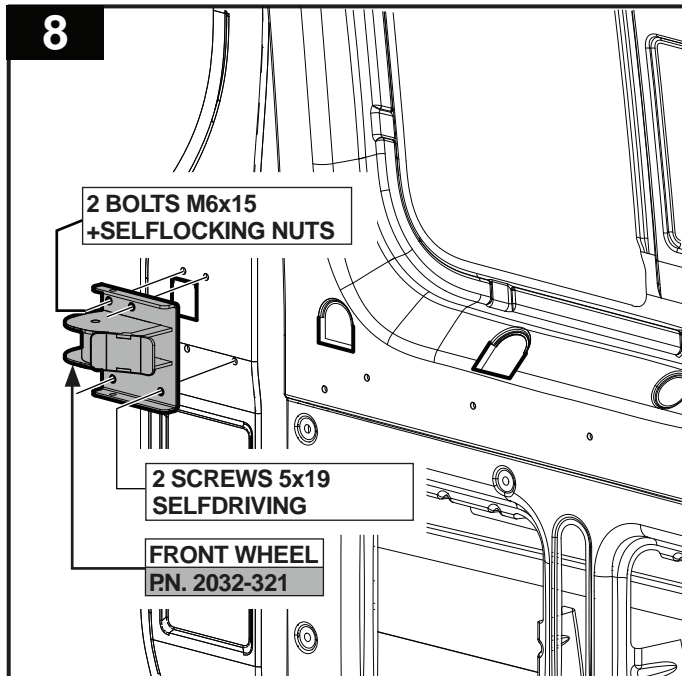
 Ø3mm (1/8") Ø6mm (1/4") Ø8mm (5/16") Ø10mm (3/8") Ø12mm (1/2") Ø14mm (9/16") Ø19mm (3/4") Ø32mm (1.1/4")
 5.5mm 8mm 10mm 15mm
 Ø10mm (3/8")

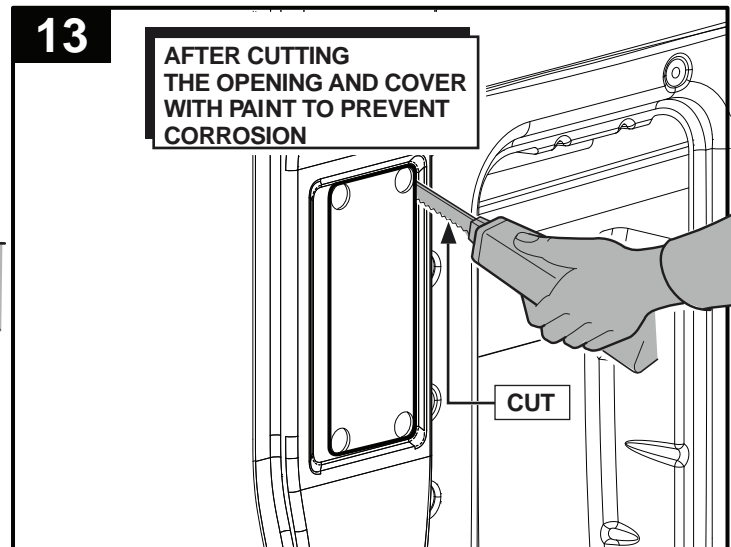
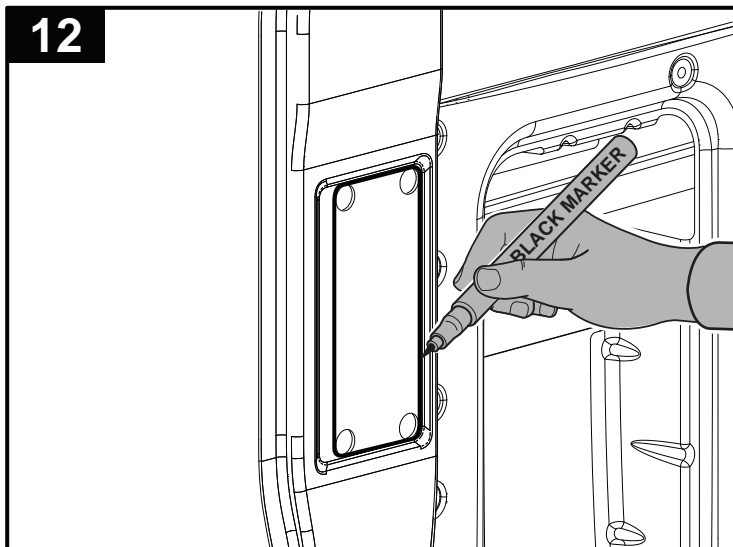
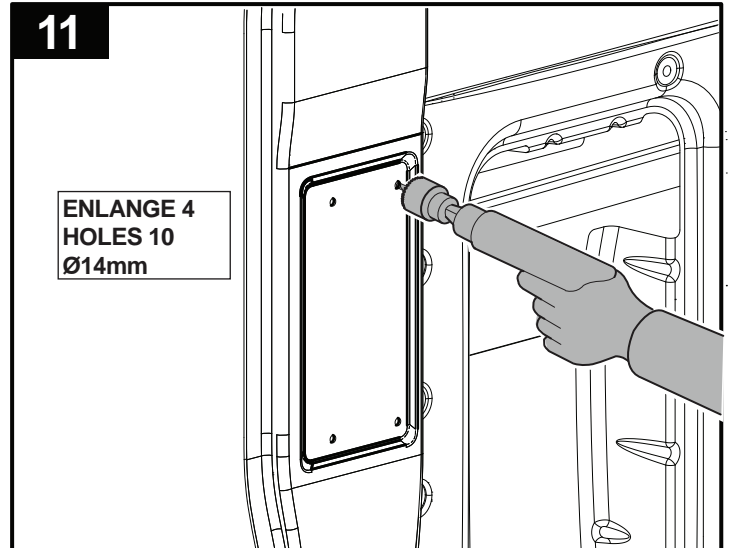
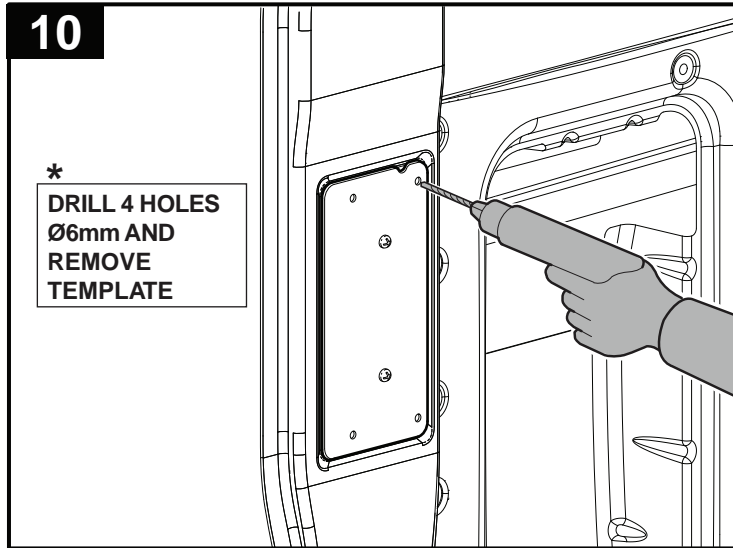
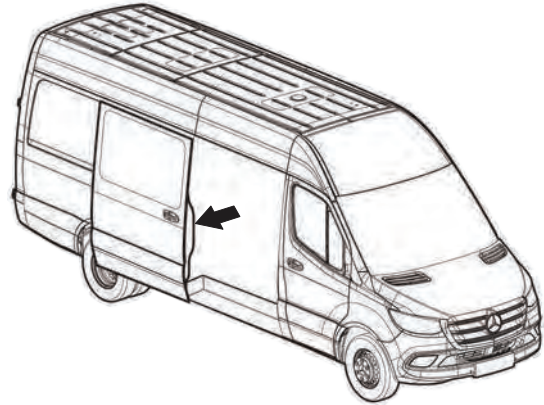
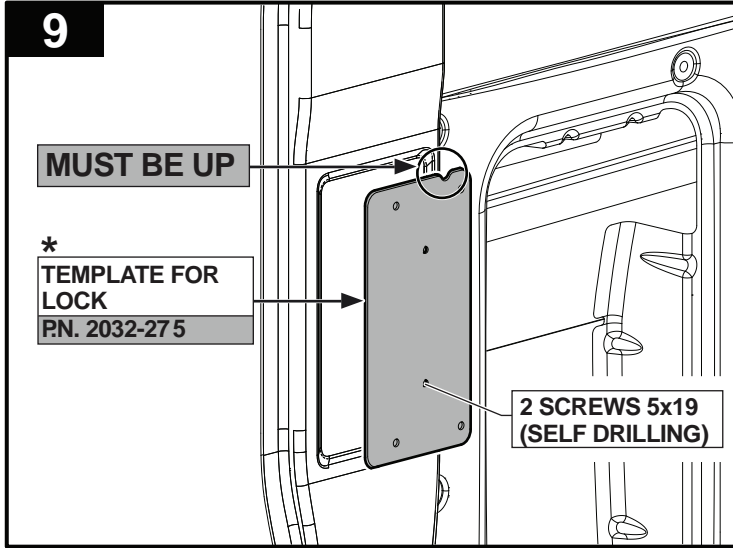


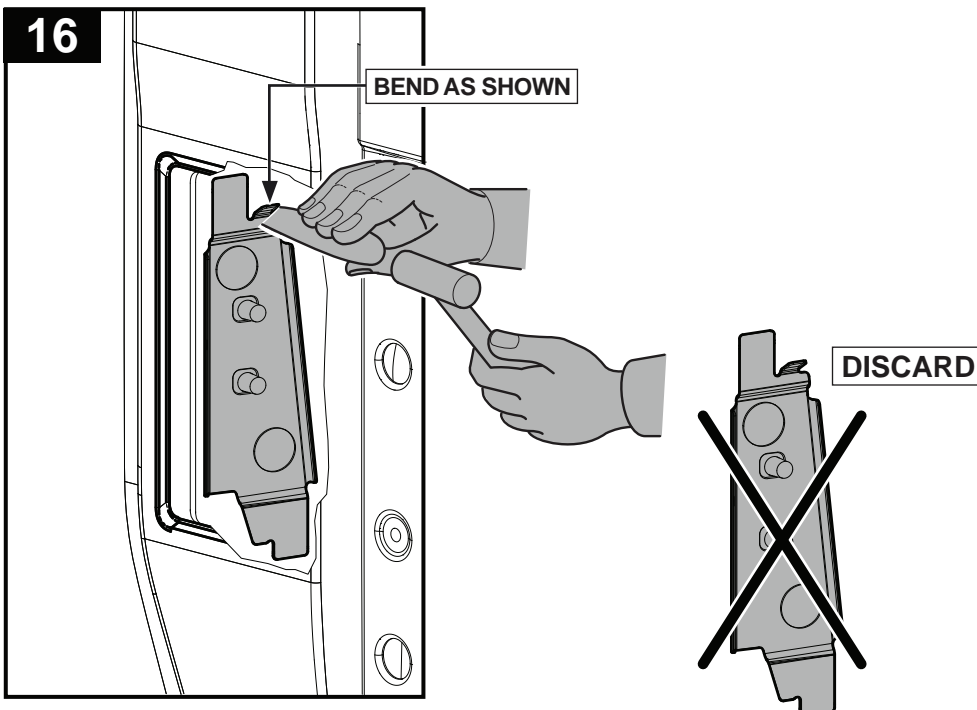
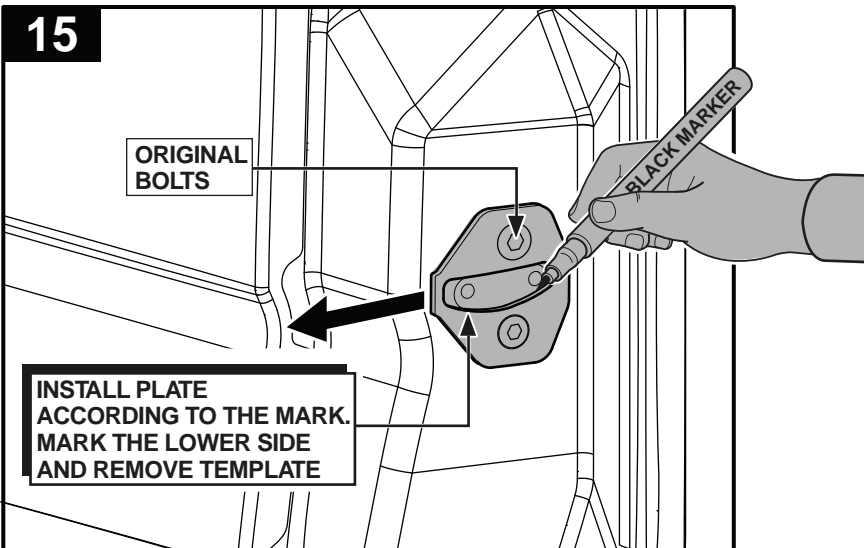
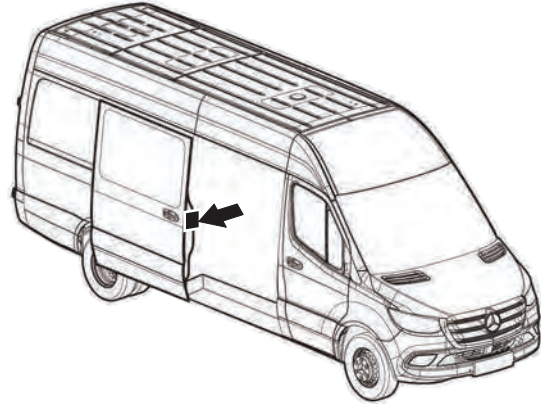
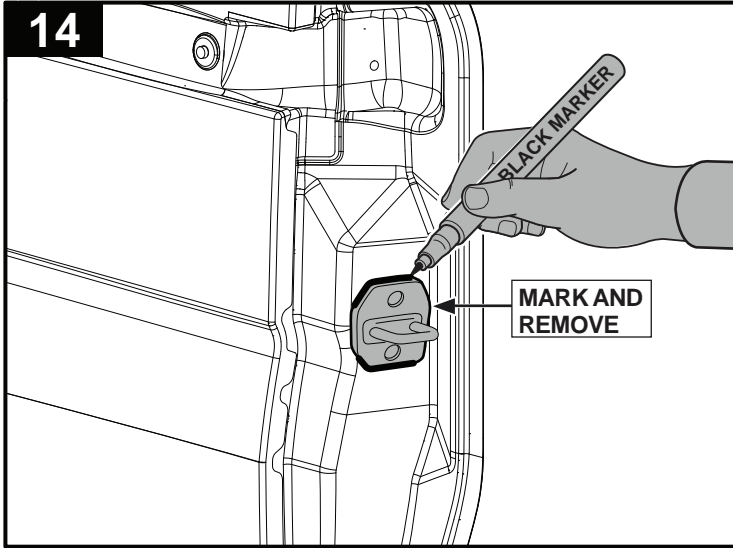


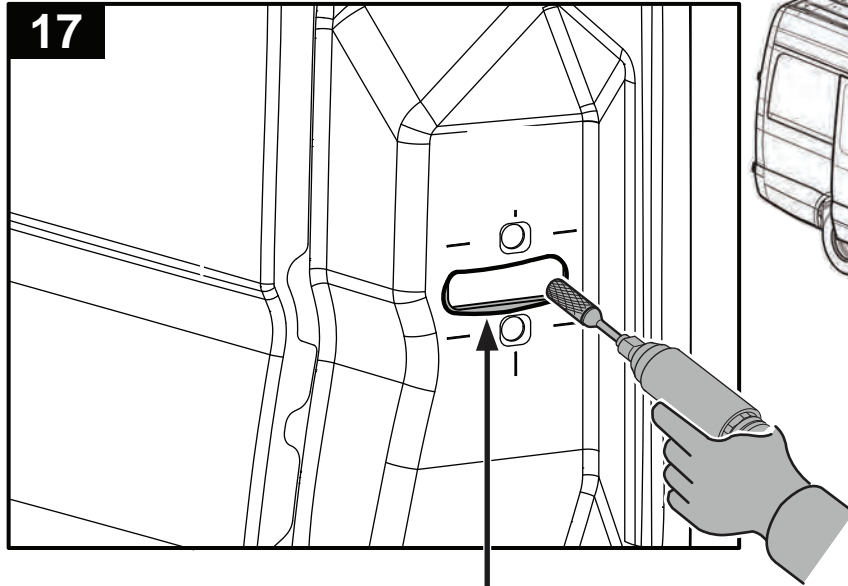


**AFTER CUTTING
THE OPENING
COVER WITH PAINT
TO PREVENT CORROSION**

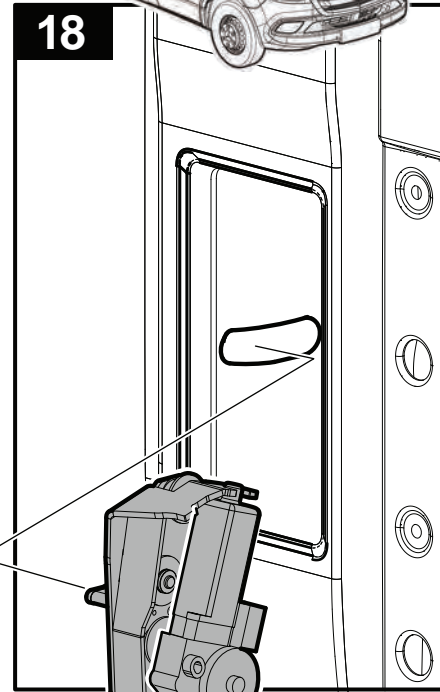
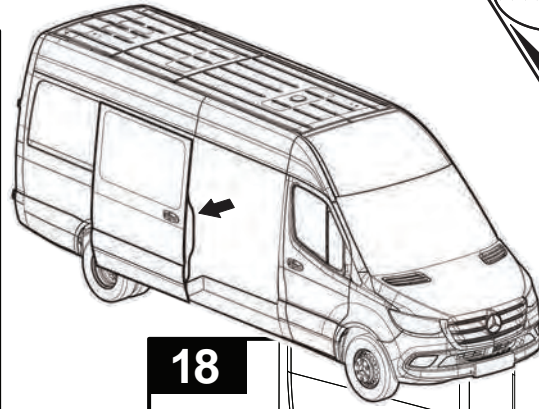






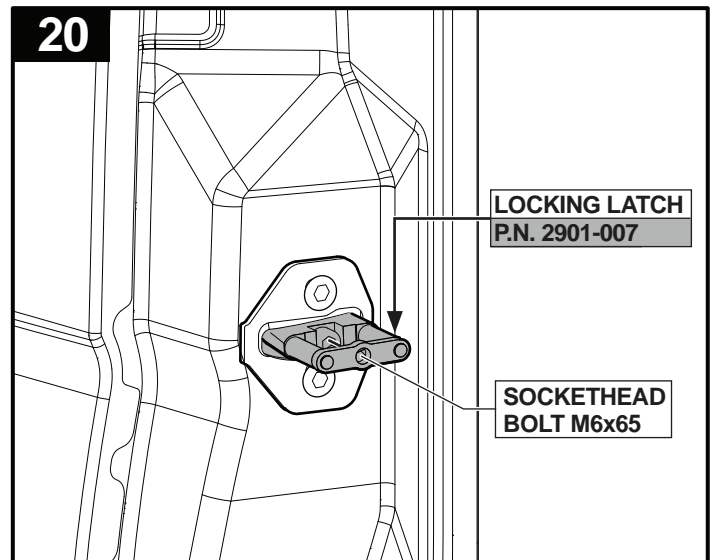
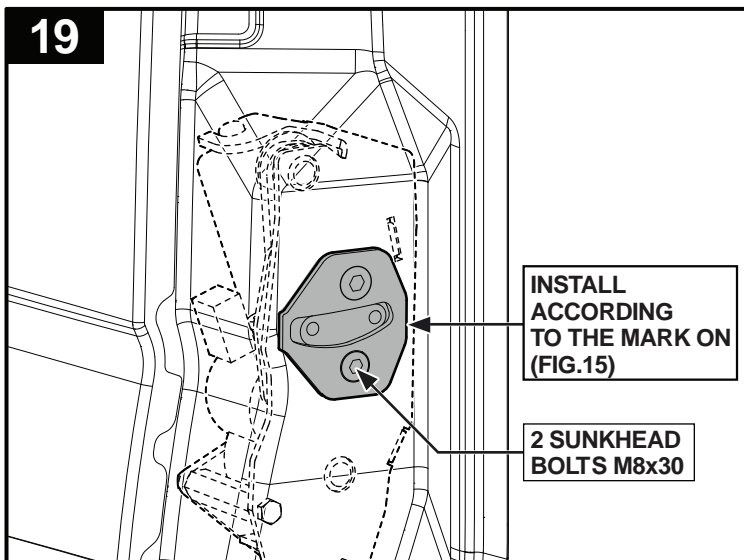


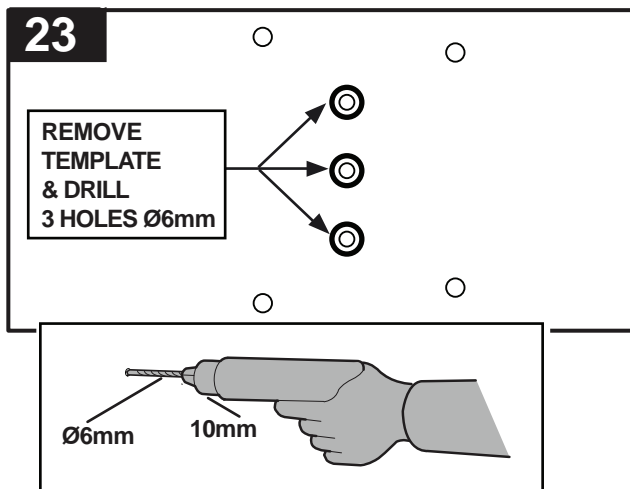
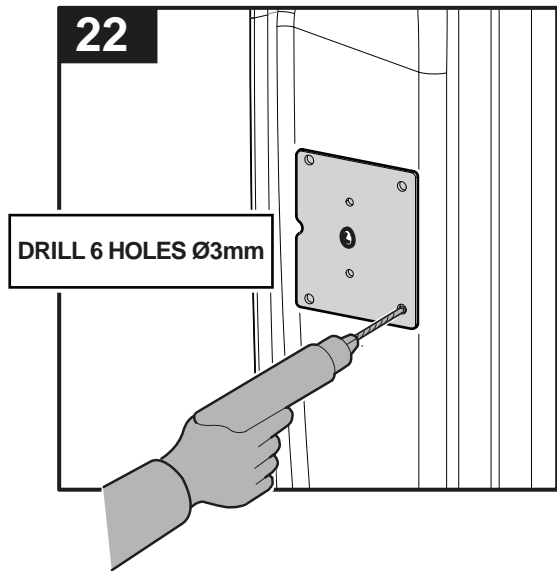
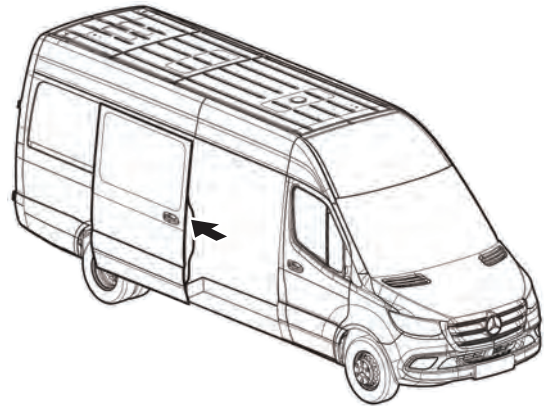
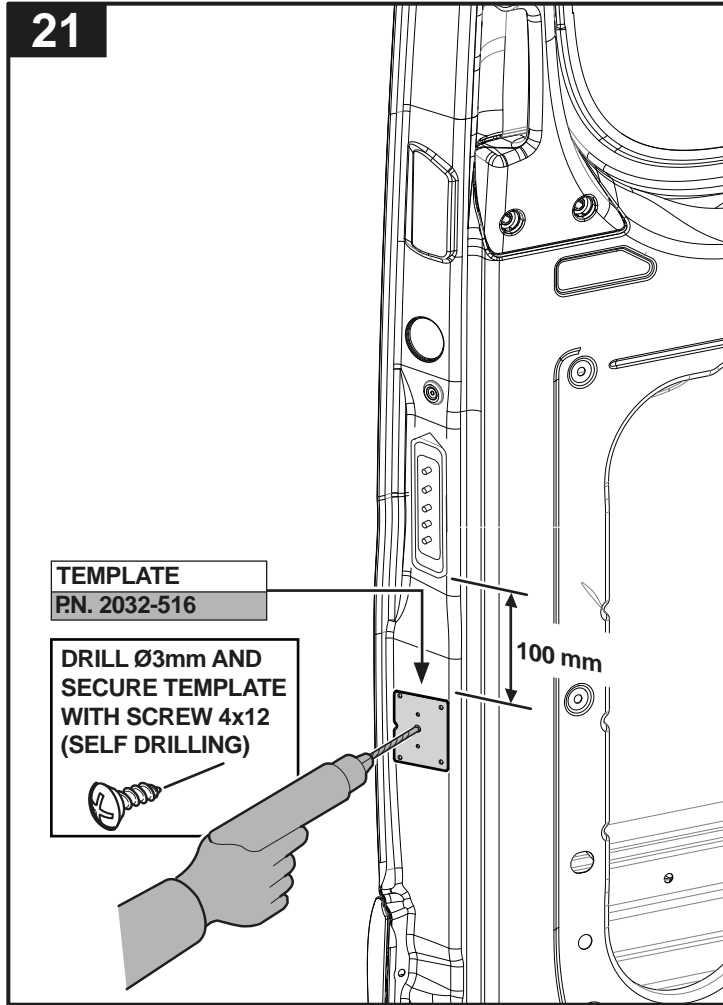
**GRIND AWAY AS MARKED
AND COVER WITH PAINT
TO PREVENT CORROSION**



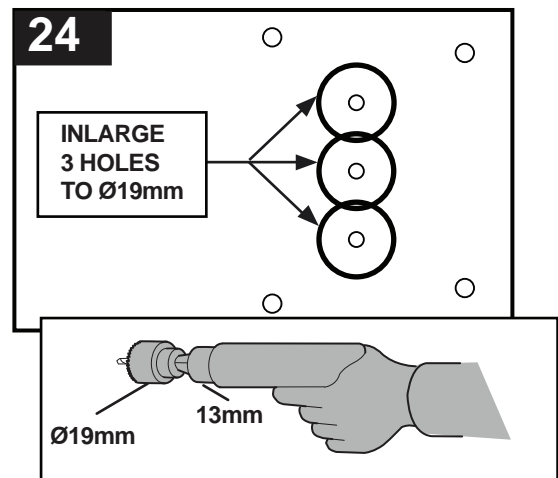
MOTOR
P.N. 5110-2172

LOCK ASSY.
P.N. 2032-274





AFTER FINISHING THE OPENING COVER WITH PAINT TO PREVENT CORROSION



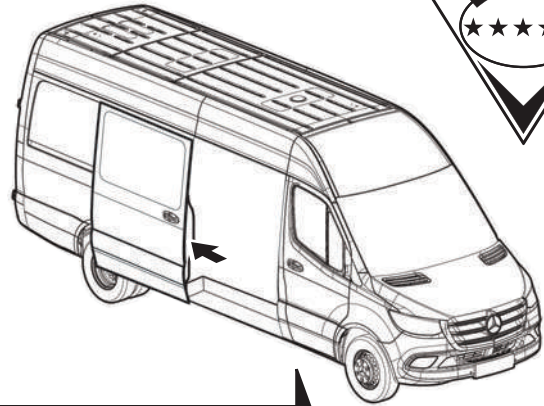


25

CONTACT HOLDER
P.N. 2032-131

2 PINS FOR TEMPLATE
P.N. 2471-588

INSTALL CONTACT HOLDER WITH 4 SUNKHEAD SCREWS 4x12 (STAINLESS STEEL)
P.N. 2420-0088



CLOSE THE DOOR FIRMLY TO MAKE MARKS ON THE DOOR FRAME (PILLAR B)

26

A

B

A

17mm

A DRILL 2 HOLES Ø3mm
B DRILL HOLE Ø19mm

27

REMOVE & DISCARD 2 PINS

28

INSTALL CONTACT PANEL (MALE) USING 2 SUNKHEAD SCREWS 4x16 (STAINLESS STEEL)
P.N. 2420-0097

YELLOW WIRE

CONTACT PANEL (MALE)
P.N. 3710-3328

BLACK WIRE



29

**INSTALL CONTACT PANEL (FEMALE)
AND THE CONTACT PANEL SPACER
USING 2 SUNKHEAD SCREWS 4x25
(STAINLESS STEEL)**

P.N. 2420-0098

**CONTACT PANEL
SPACER**

P.N. 2032-343

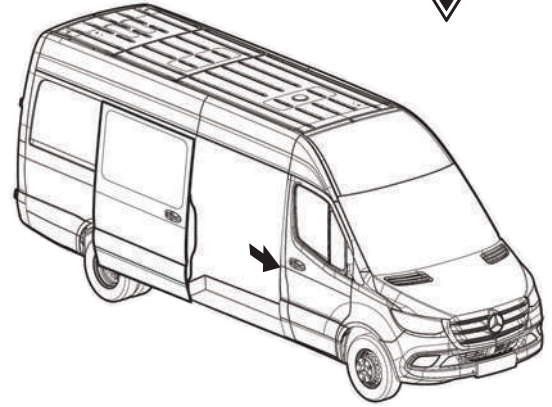
YELLOW WIRE



BLACK WIRE

**CONTACT PANEL
(FEMALE)**

P.N. 3710-3338



30

**CONNECT GREEN WIRE FROM
PLUG 3 PIN 4 TO CABLE
N °4 (BLUE / BROWN)
FOR OPEN / CLOSE SIGNAL
(SEE PAGE 26)**



31

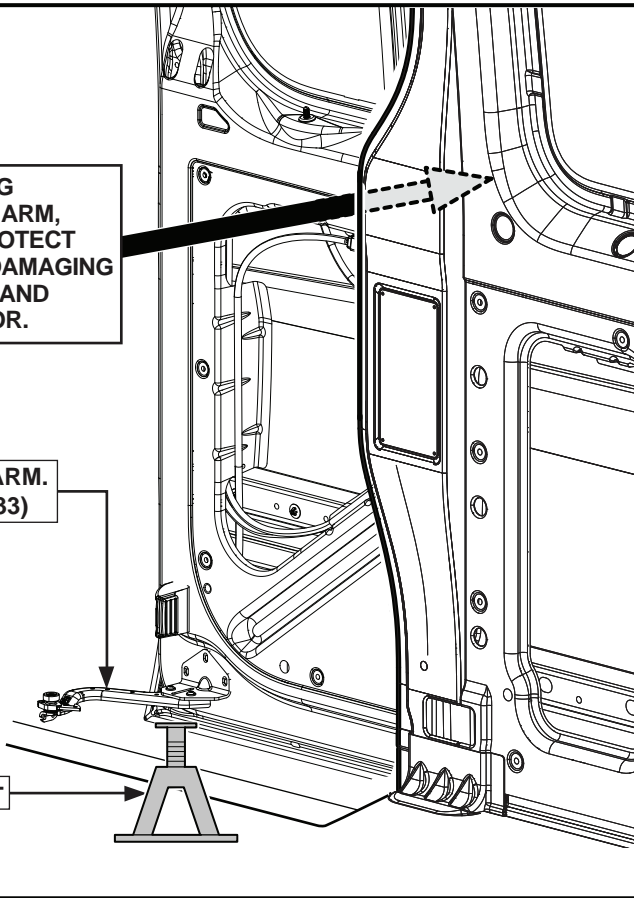


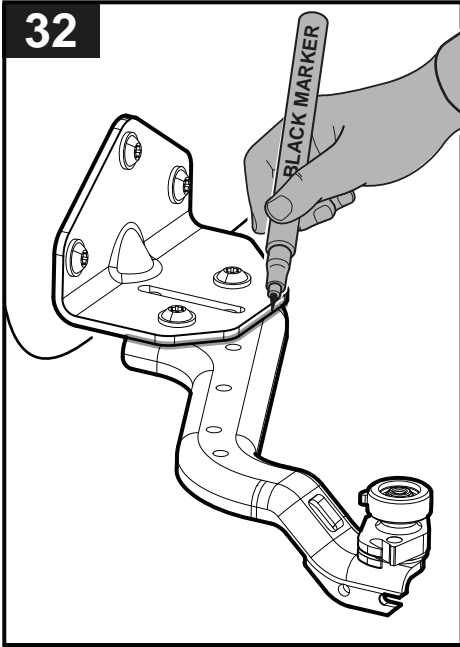
BEFORE REMOVING THE LOWER DOOR ARM, MAKE SURE TO PROTECT THE DOOR FROM DAMAGING THE VEHICLE SIDE AND SUPPORT THE DOOR.

DISMANTLE THE ARM. SEE (FIG. 32 AND 33)



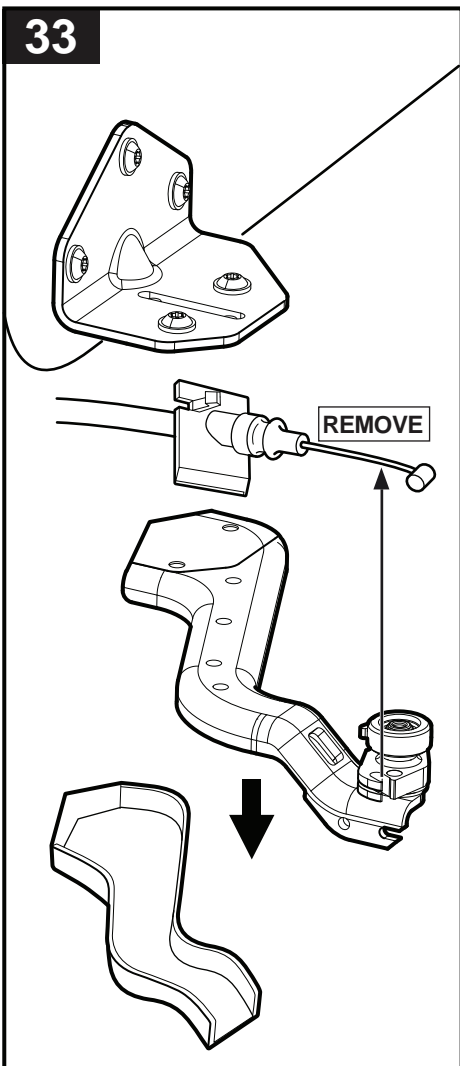
DOOR SUPPORT





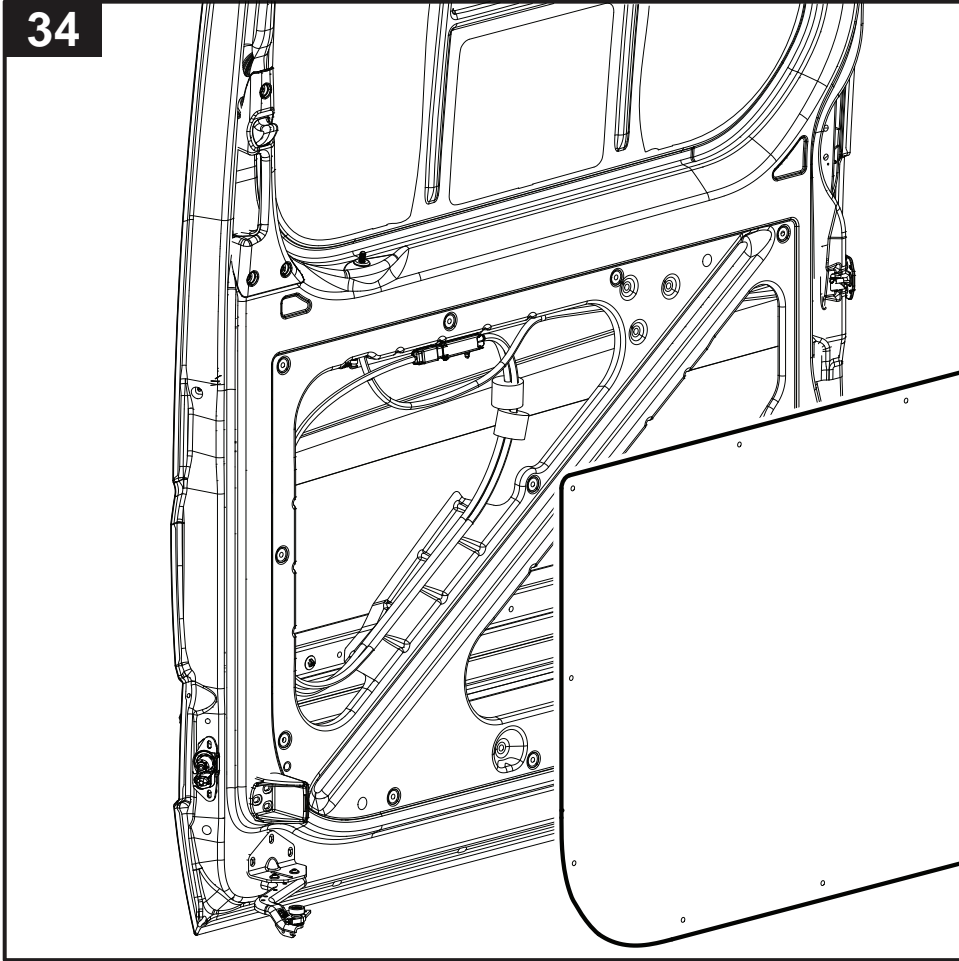
1. MARK LOWER ARM.
2. PROTECT THE DOOR FROM DAMAGING THE VEHICLE SIDE. (FIG. 33)
3. SUPPORT THE DOOR IN ORDER TO PREVENT THE DOOR FROM FALLING. (FIG. 33)
4. DISCONNECT THE LOWER DOOR ARM.(2 BOLTS)
5. DISCONNECT THE LOWER CABLE.
6. REINSTALL ALL PARTS BACK ACCORDING TO THE MARK.
*THE ORIGINAL CABLE SHOULD BE CONNECTED TO THE LEVER ON THE ACTUATOR ASSY. (SEE FIG. 35)

REINSTALL ALL PARTS BACK





34



**REMOVE COVER PANEL.
REINSTALL AFTER
INSTALLING
THE ACTUATOR ASSEMBLY**



35

1. DISCONNECT ORIGINAL CABLE FROM INSIDE DOOR HANDLE.
2. RE-ROUTE ORIGINAL CABLE TO LOWER ACTUATOR ASSY. ②
3. CONNECT NEW CABLE (P.N. 2032-251) TO INSIDE DOOR HANDLE AND UPPER ACTUATOR ASSY. ③

NEW CABLE
 P.N. 2032-251

WIRE TO CONTACT

MOTOR
 P.N. 5110-2182

ACTUATOR ASSY.
 P.N. 2032-2761

FASTEN UNIT AS SHOWN USING 5 SCREWS 5x19 (SELFDRILLING)

RE-ROUTE ORIGINAL CABLE FROM LOWER DOOR ARM.

ORIGINAL CABLE

RE-ROUTE ORIGINAL CABLE

MICROSWITCH SHOULD NOT BE PRESSED WHEN DOOR HANDLES ARE NOT BEING PULLED

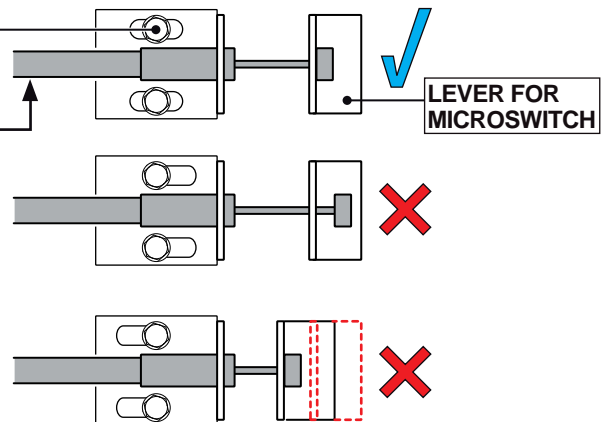
ADJUSTING BOLTS

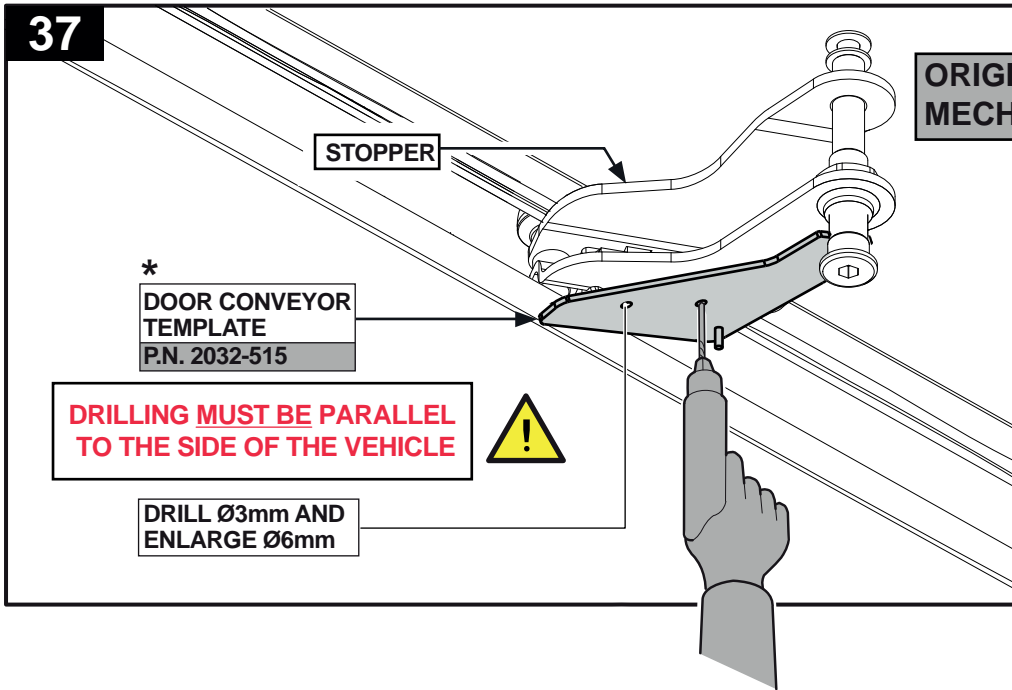
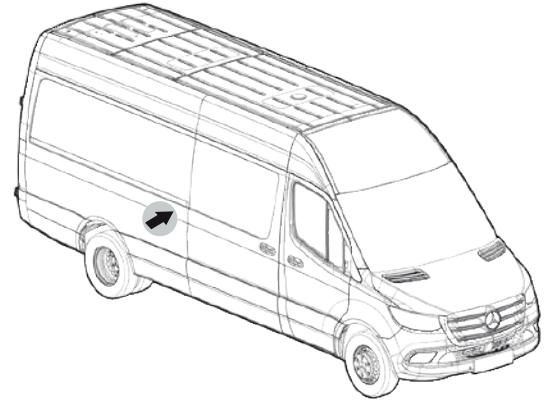
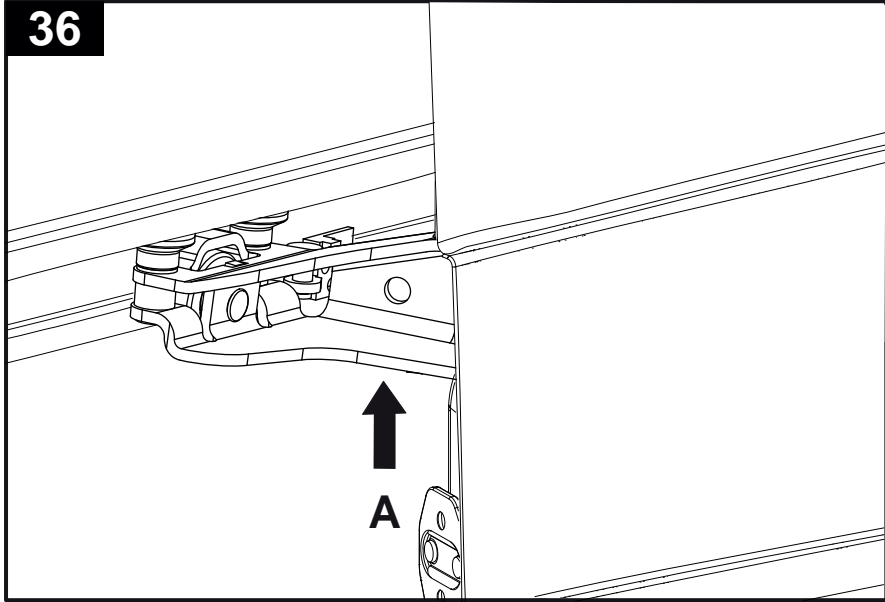
CABLE

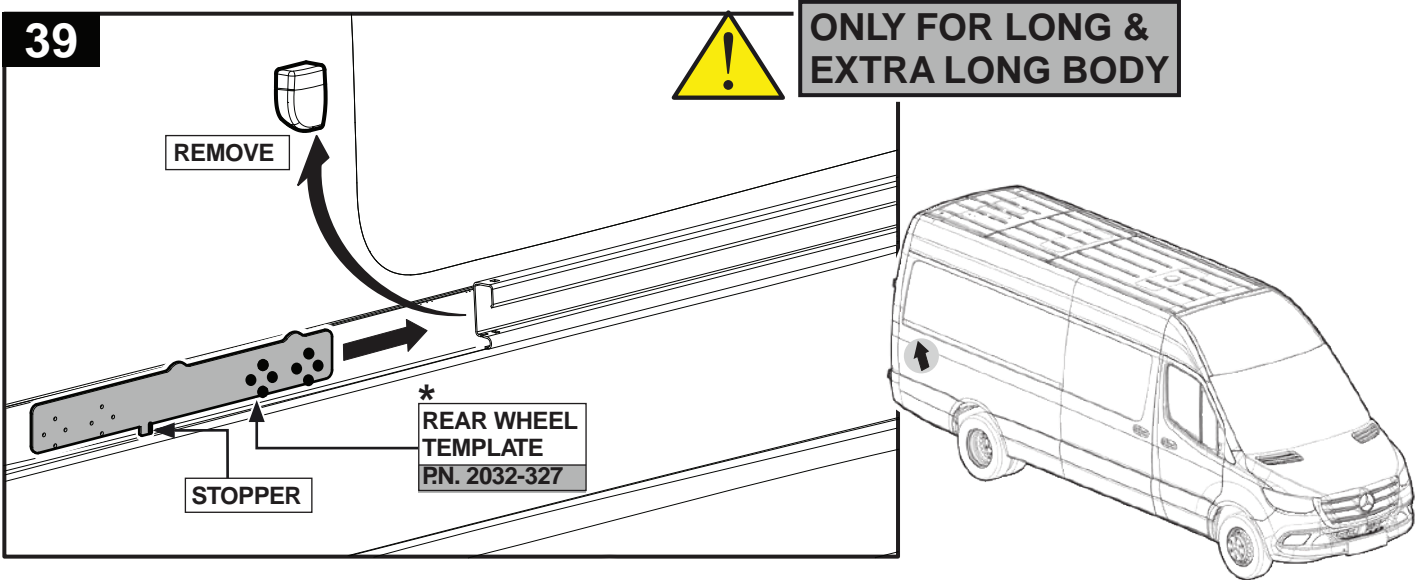
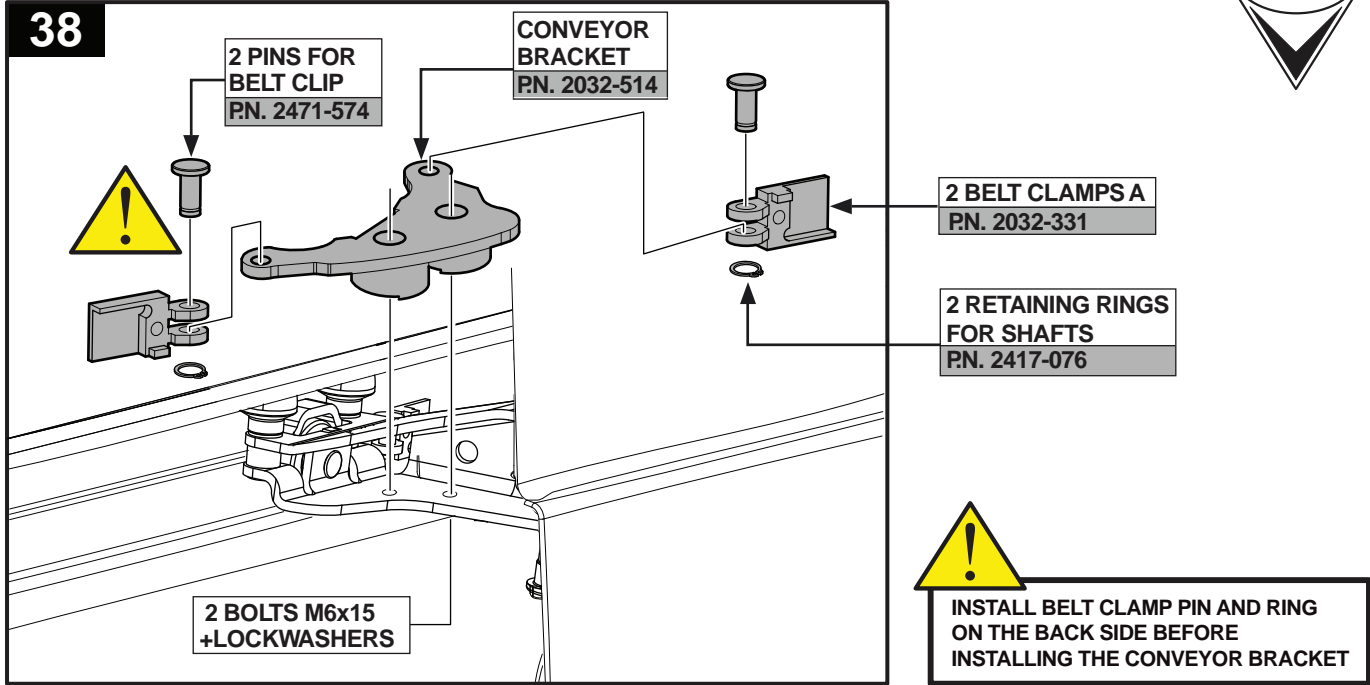
LEVER FOR MICROSWITCH

CABLE ADJUSTMENT ②,③,④

RELEASE 2 BOLTS AND ADJUST THE CABLE ACCORDING THE DRAWINGS



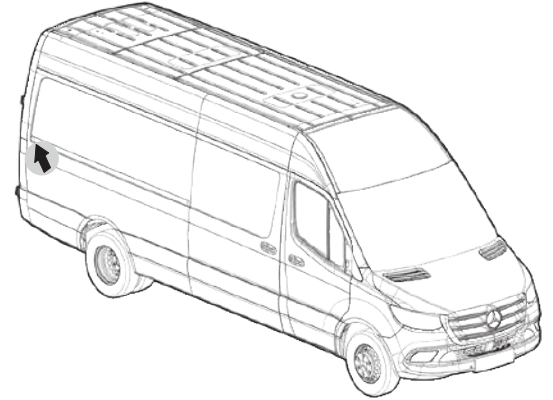
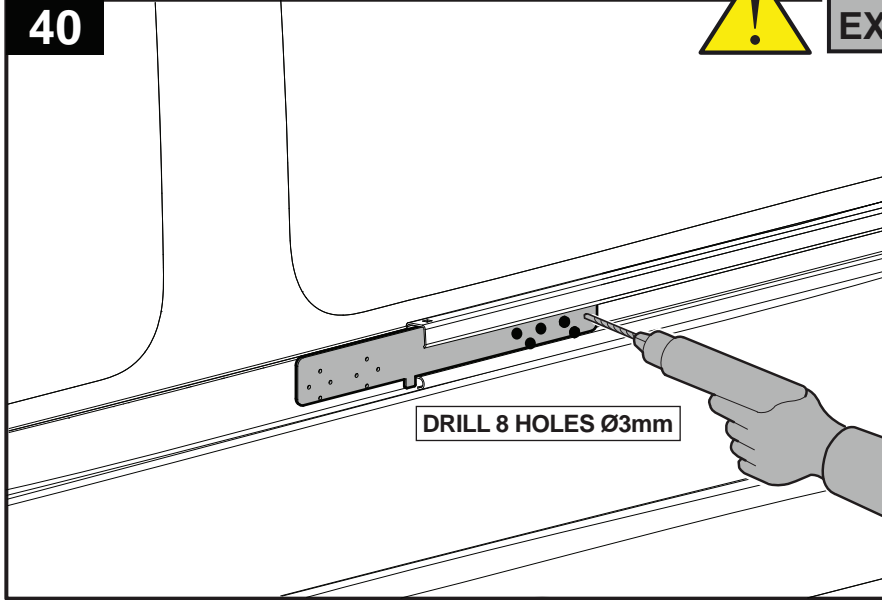




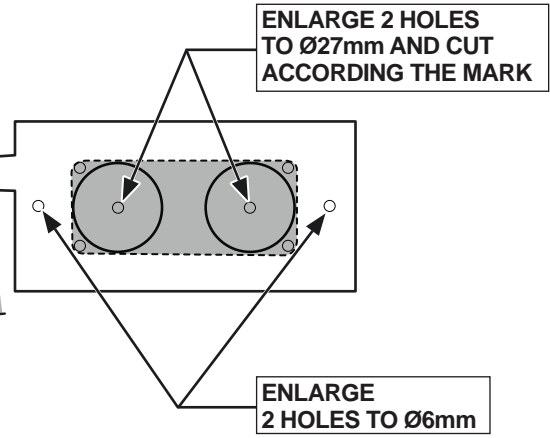
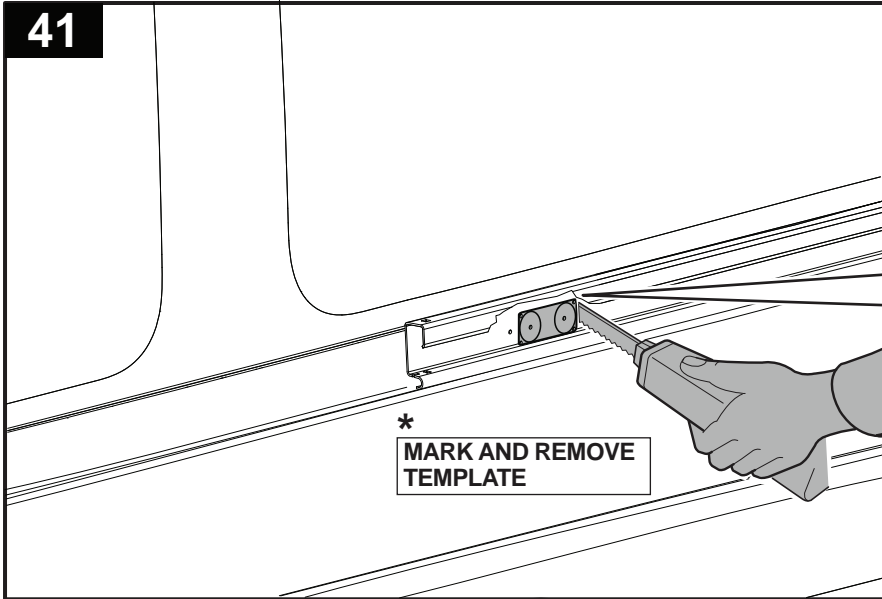
ONLY FOR LONG & EXTRA LONG BODY



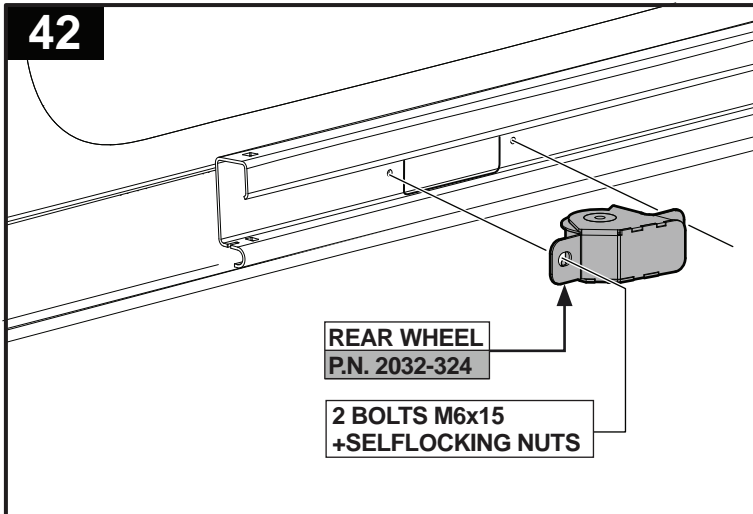
40



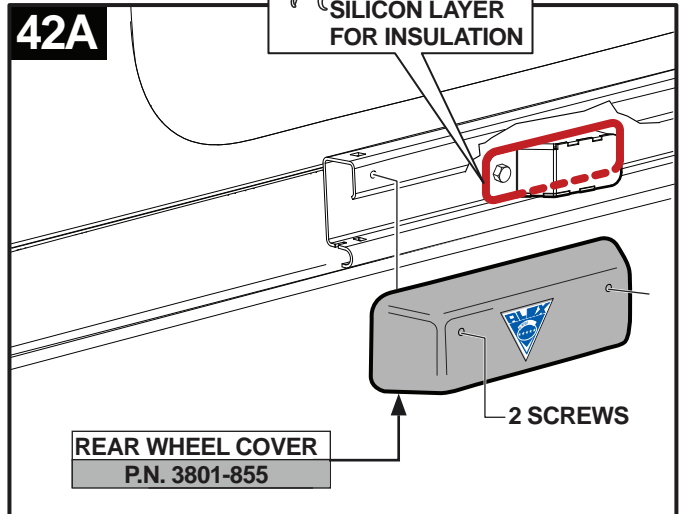
41



42



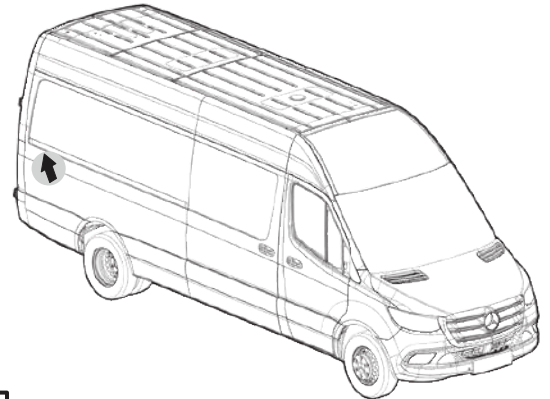
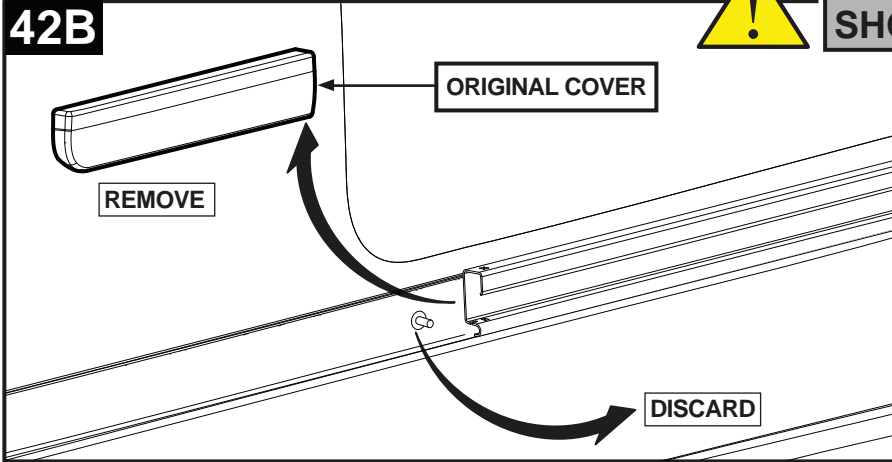
42A



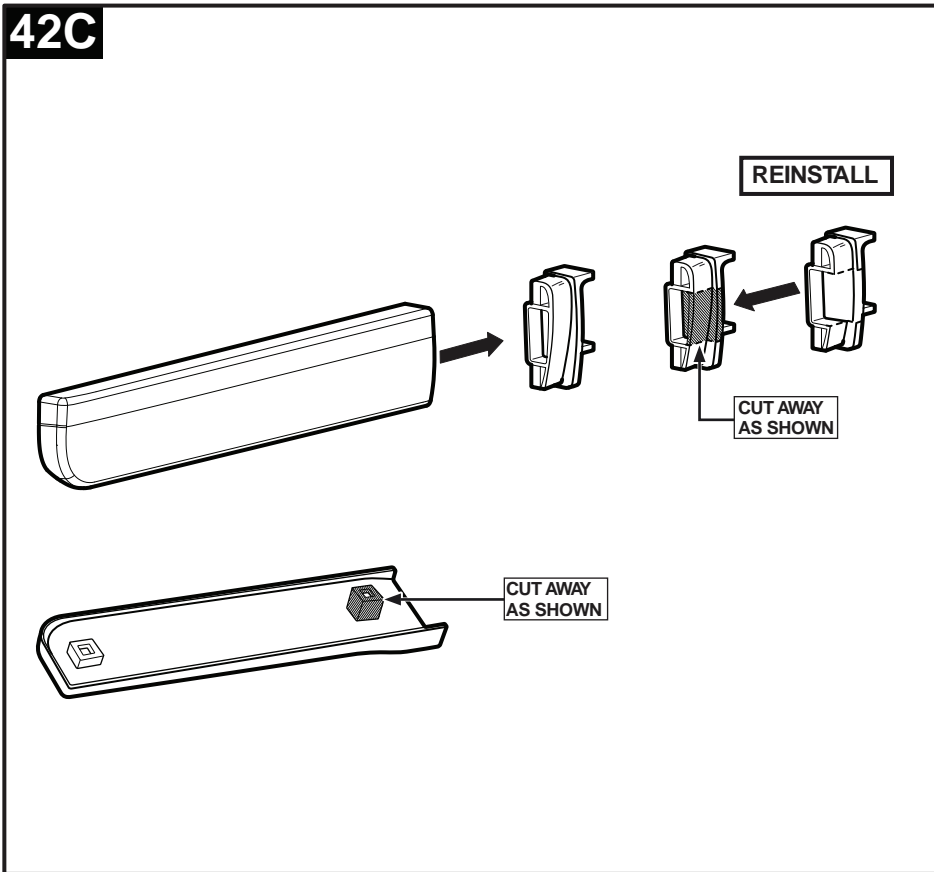


ONLY FOR SHORT BODY

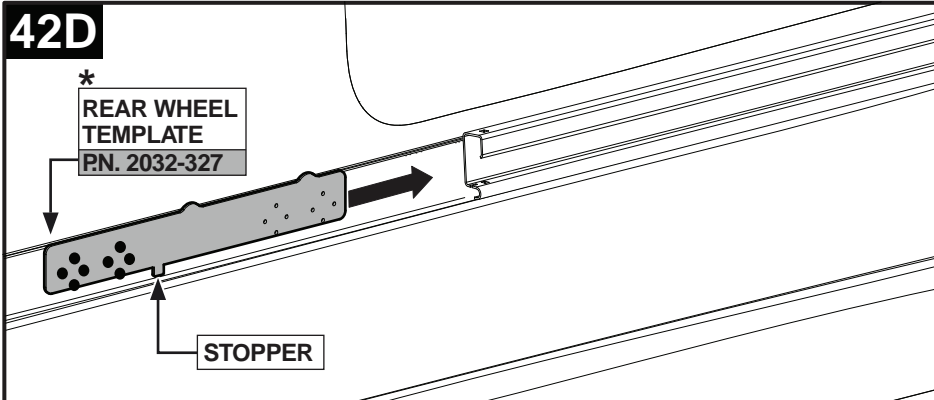
42B



42C



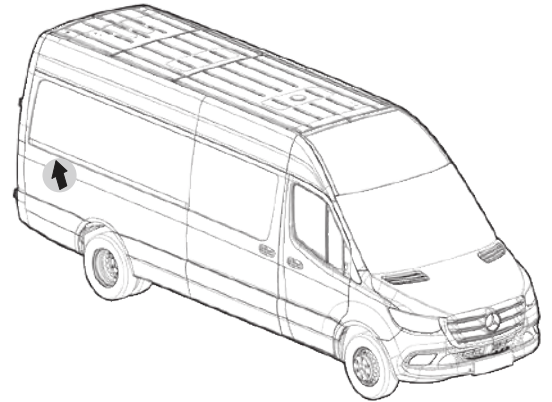
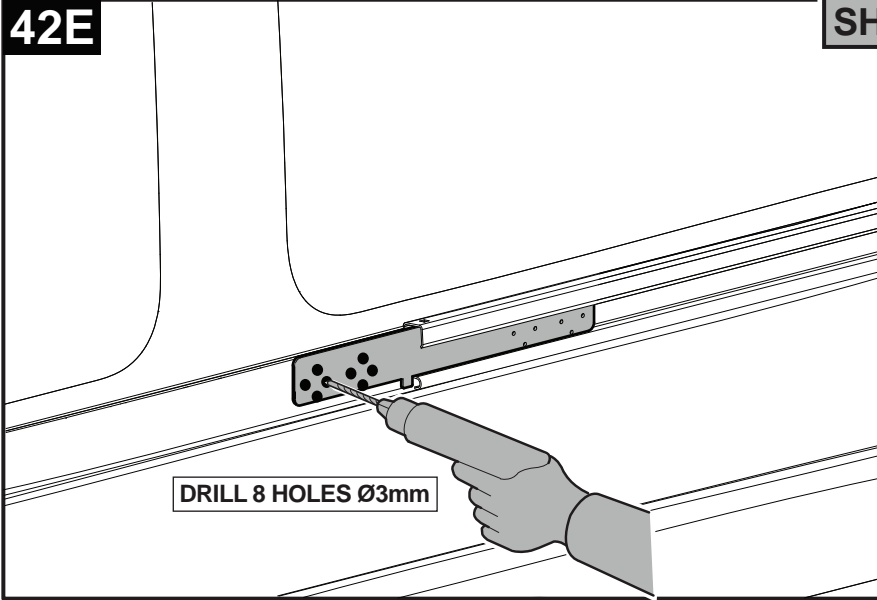
42D



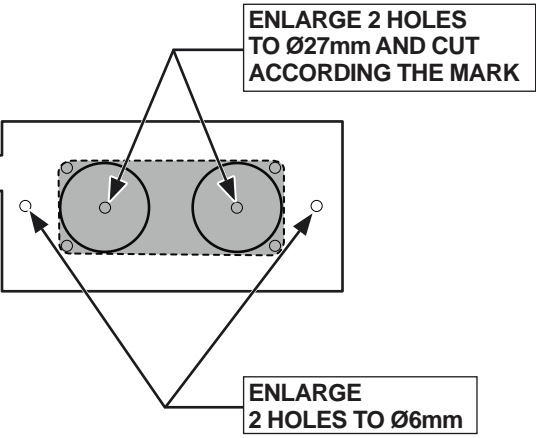
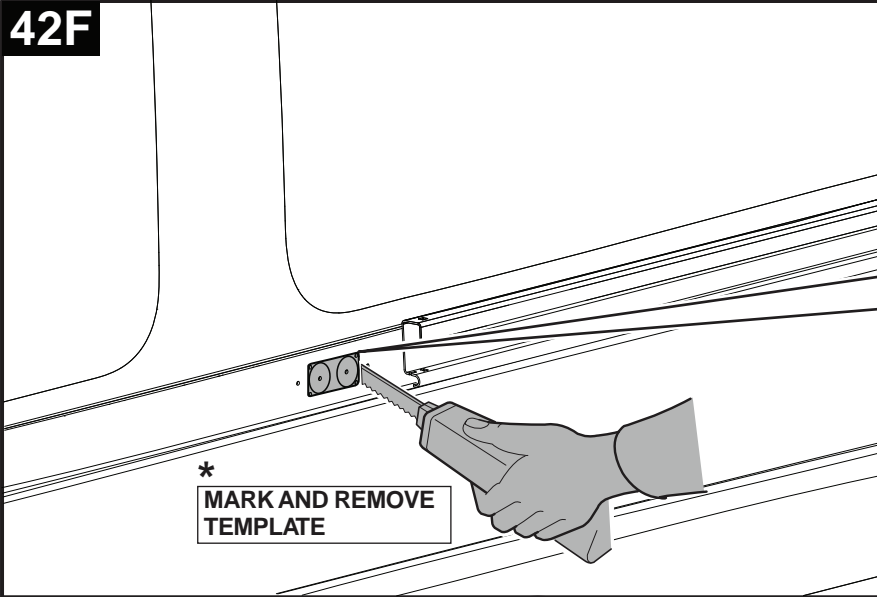


**ONLY FOR
SHORT BODY**

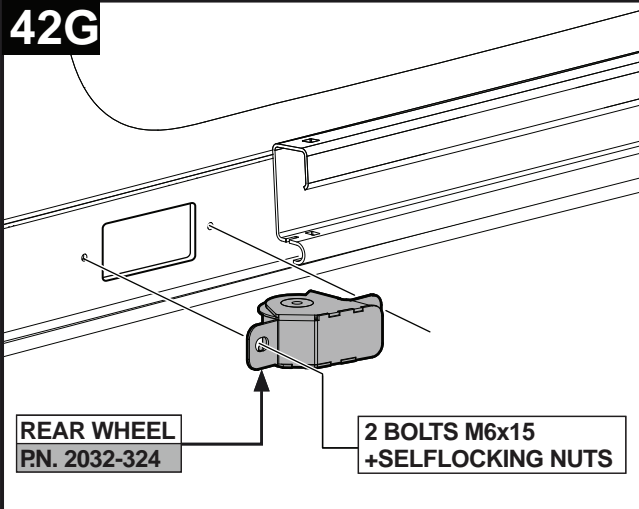
42E



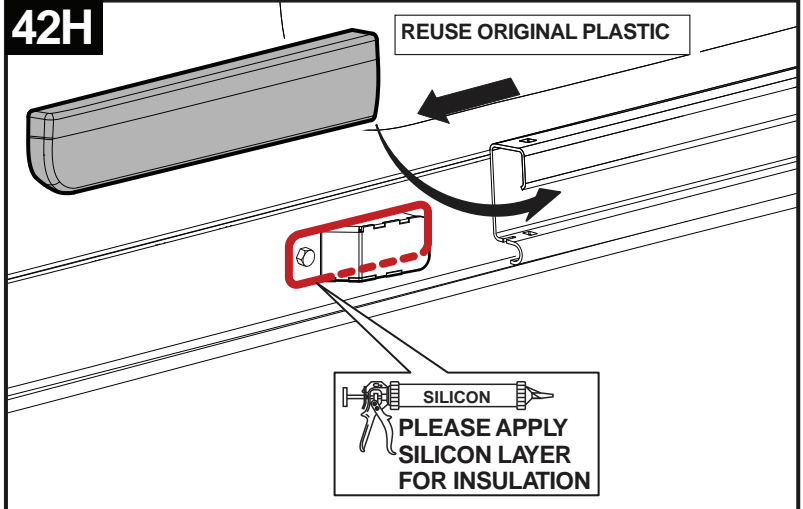
42F

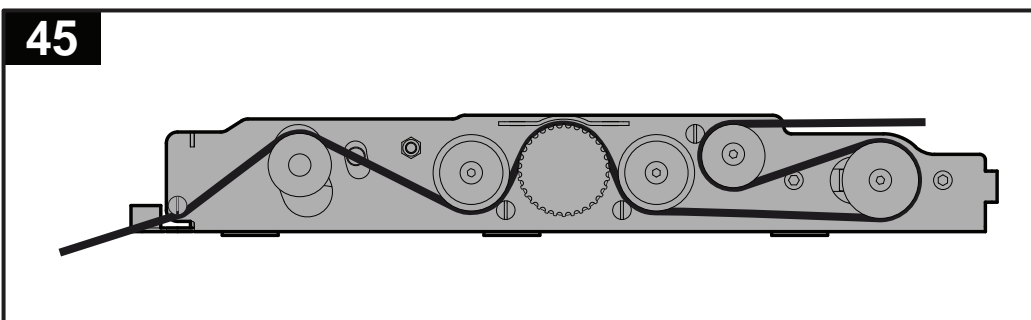
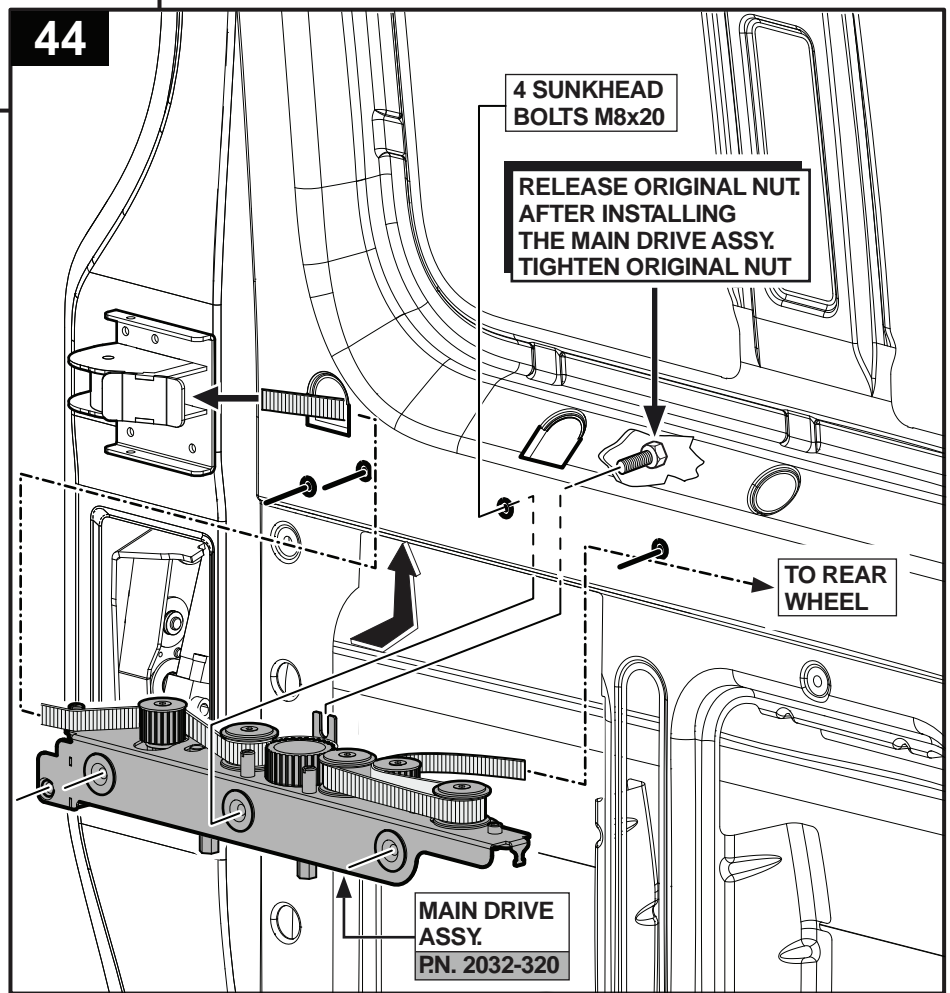
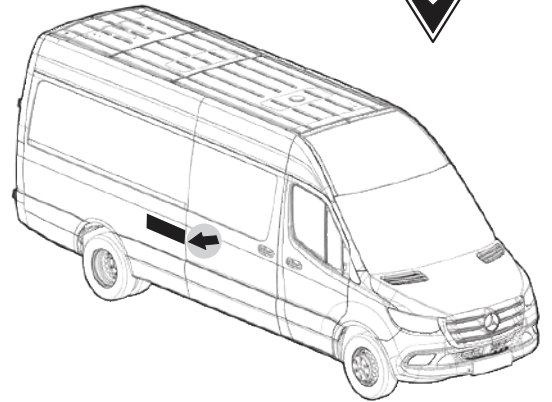
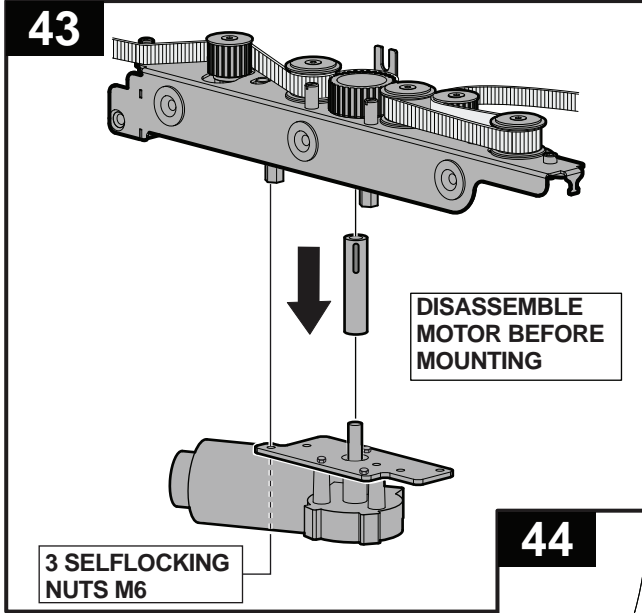


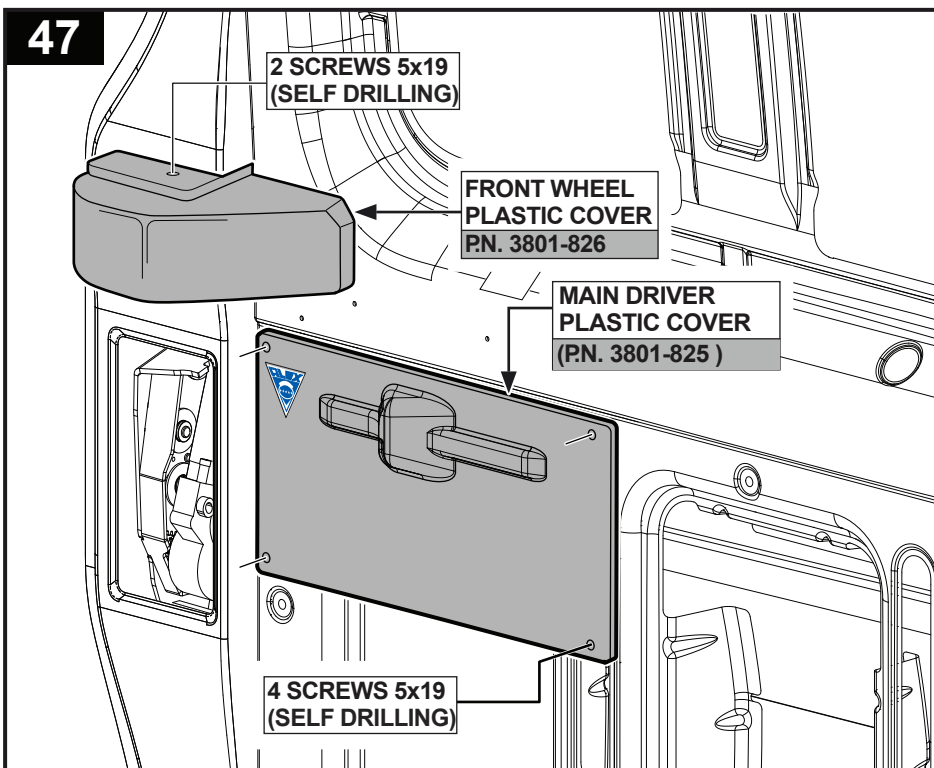
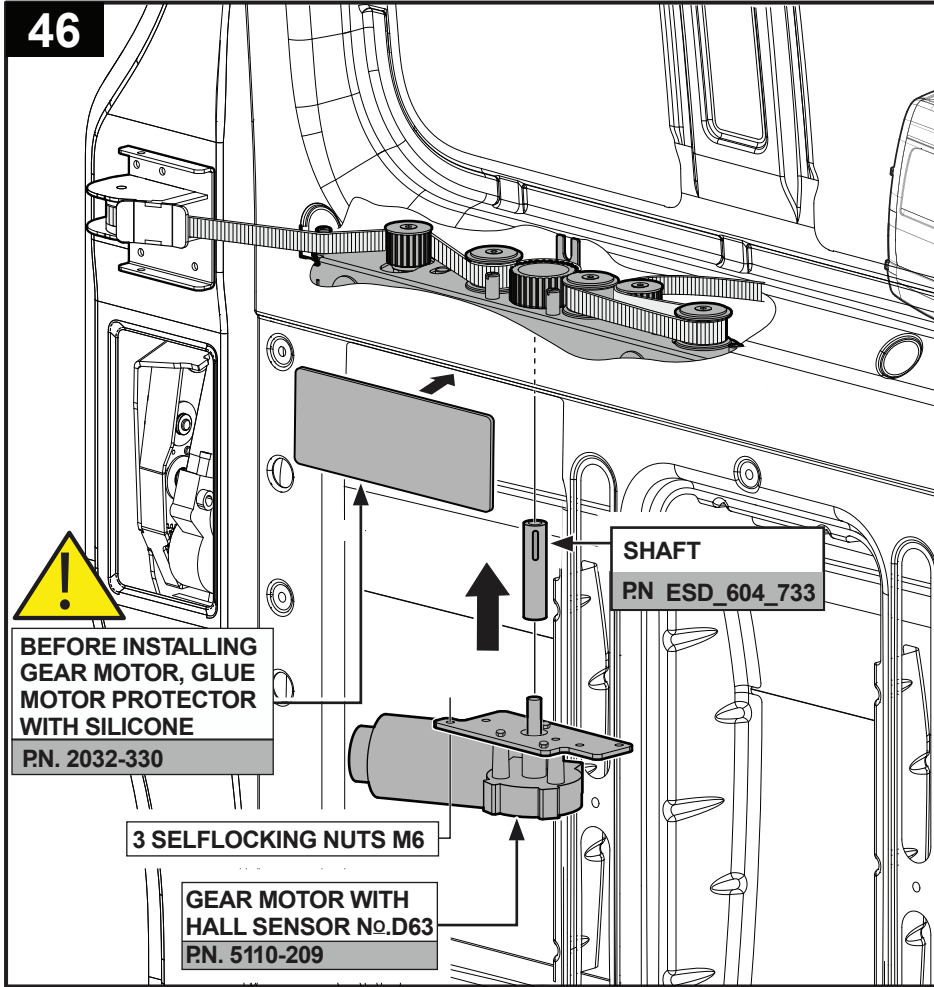
42G



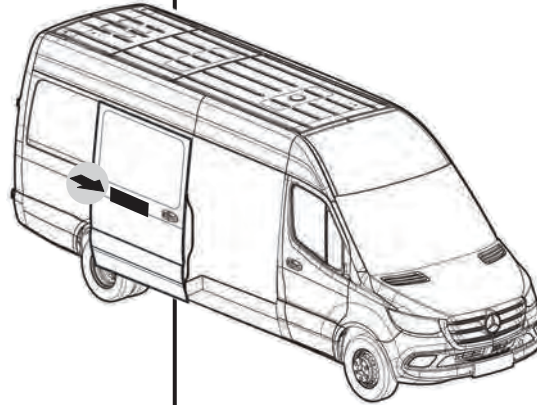
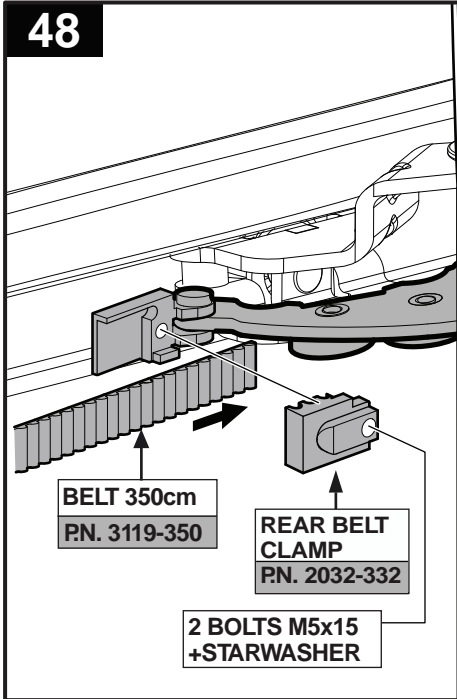
42H



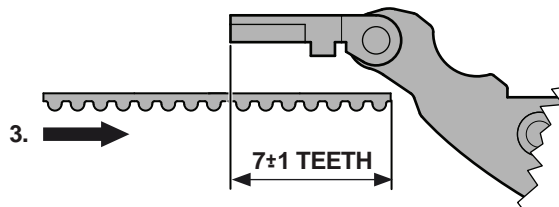




48



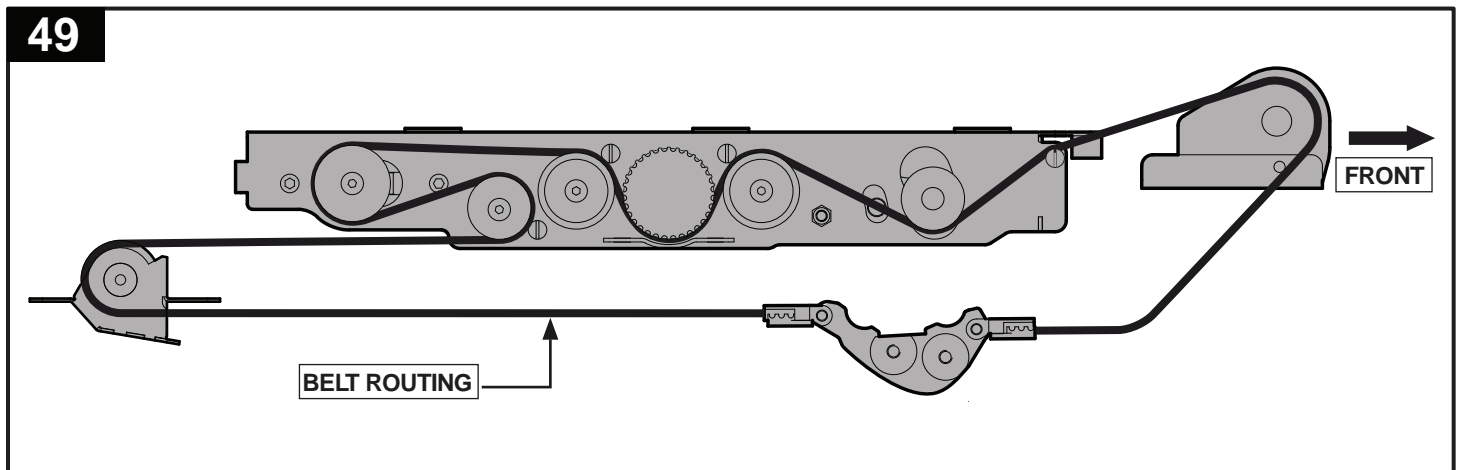
BELT LENGTH ADJUSTMENT



- 1. CLOSE THE DOOR.
- 2. RELEASE BELT FROM REAR BELT CLAMP
- 3. STRETCH THE BELT AND CUT ACCORDING THE DRAWING, LEAVING 8 TEETH.

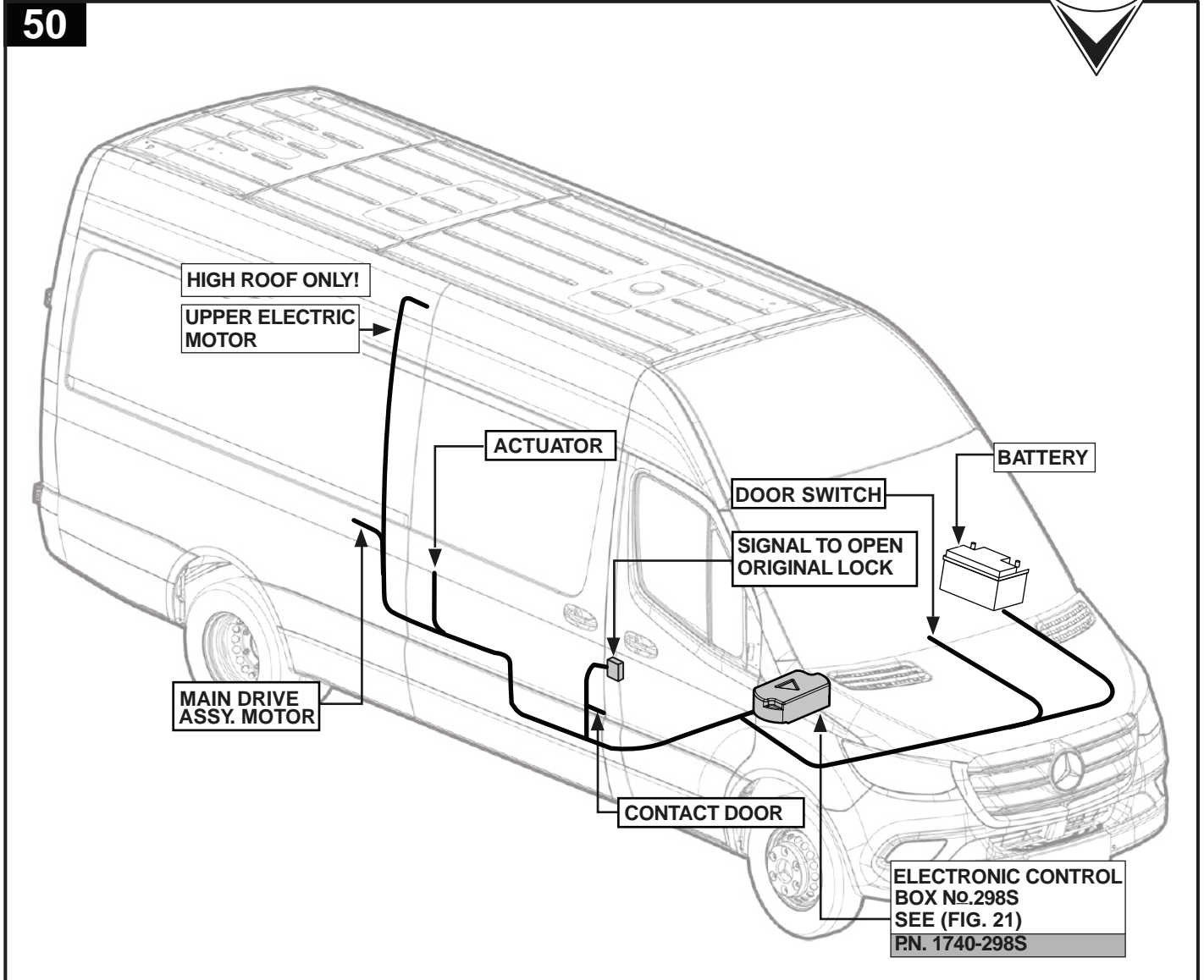


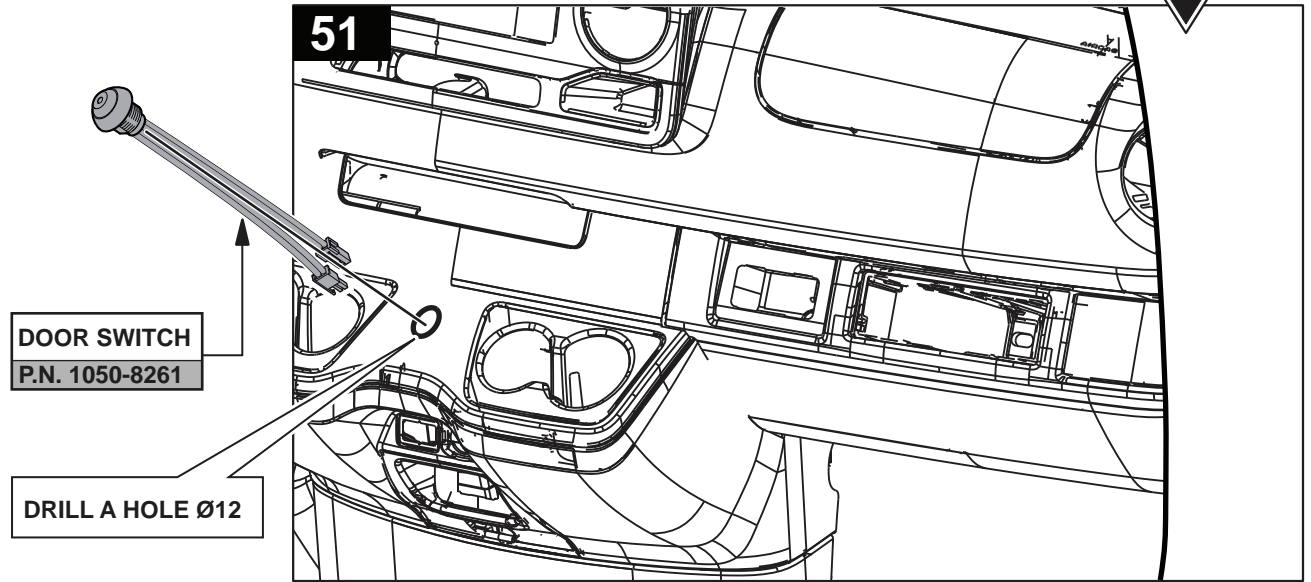
49





50

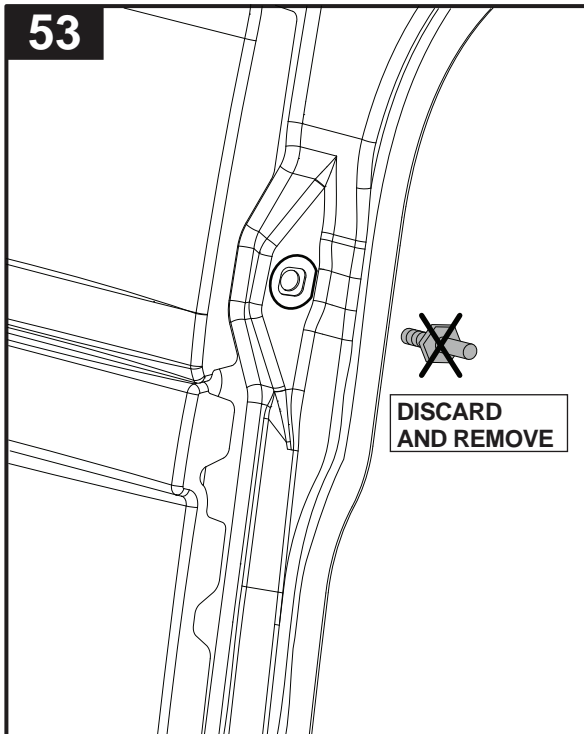
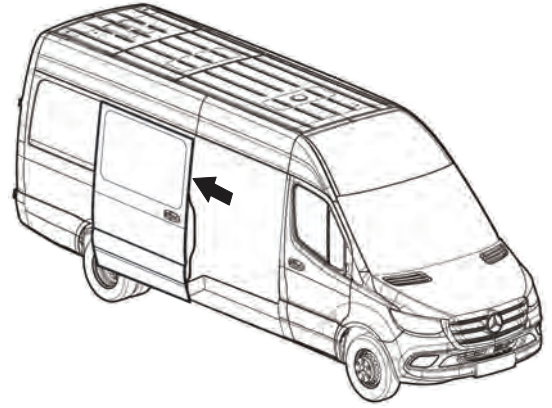
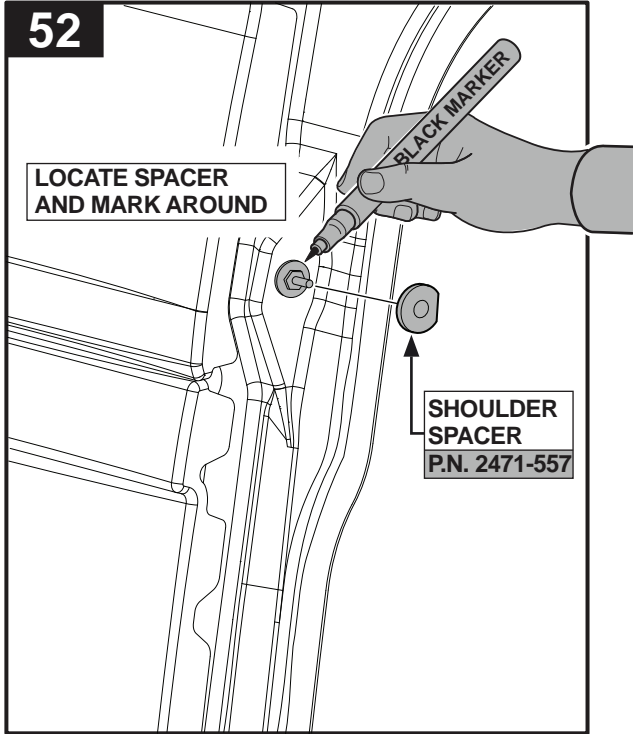






OPTIONAL

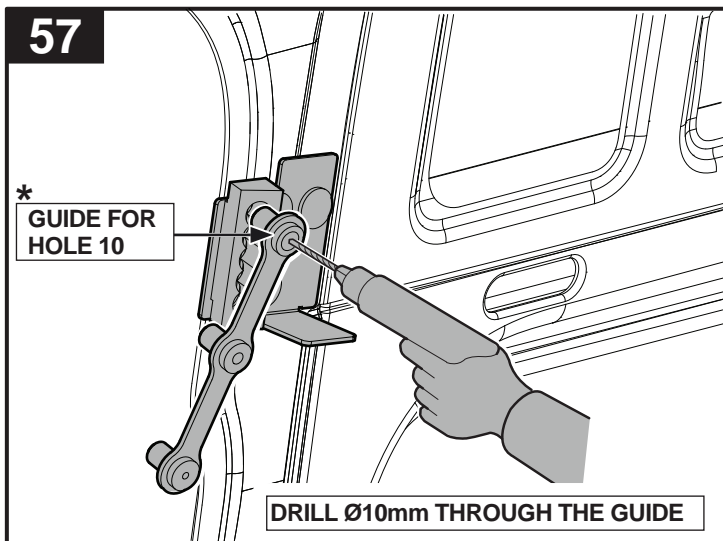
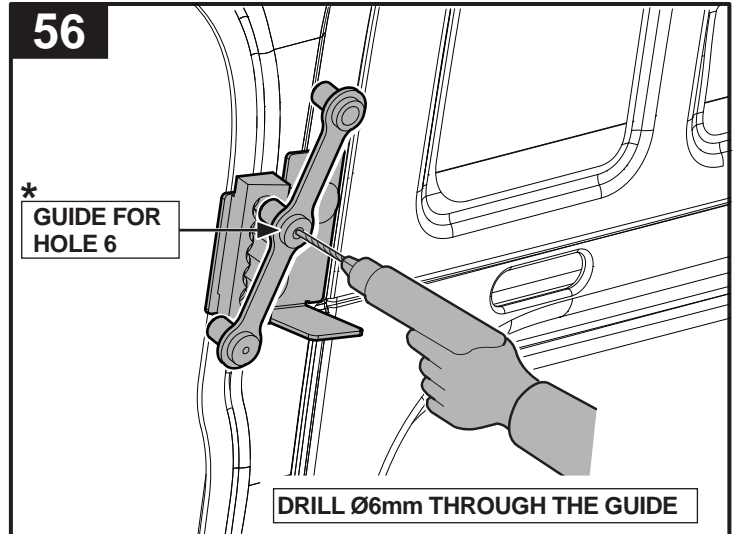
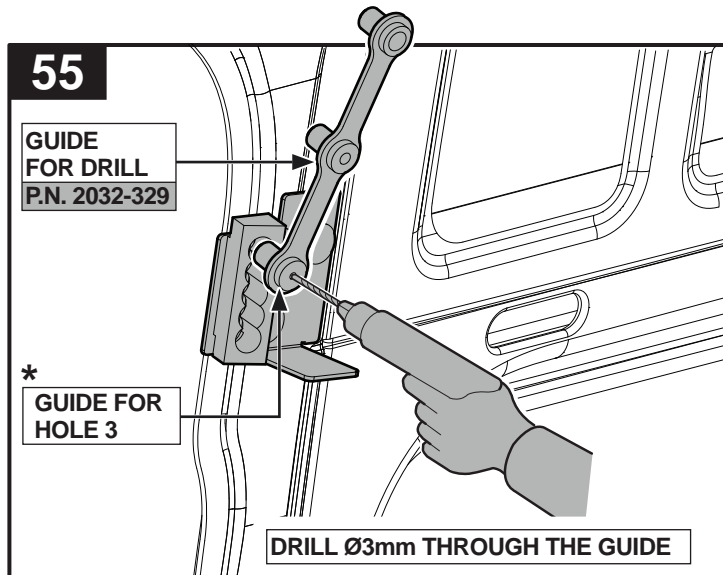
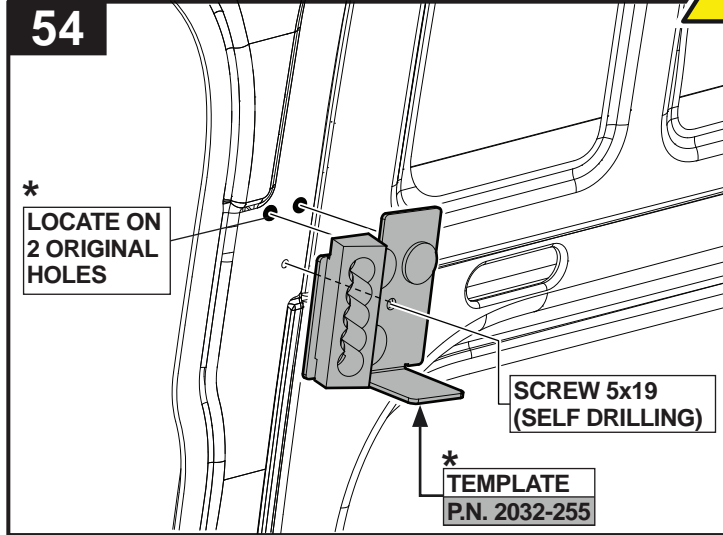
**FOR HIGH ROOF ONLY
UPPER LOCK ASSY.
P.N.4276-953**





OPTIONAL

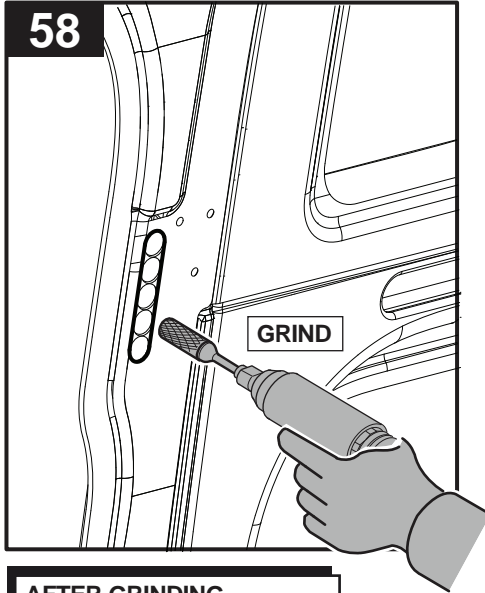
**FOR HIGH ROOF ONLY
UPPER LOCK ASSY.
P.N.4276-953**



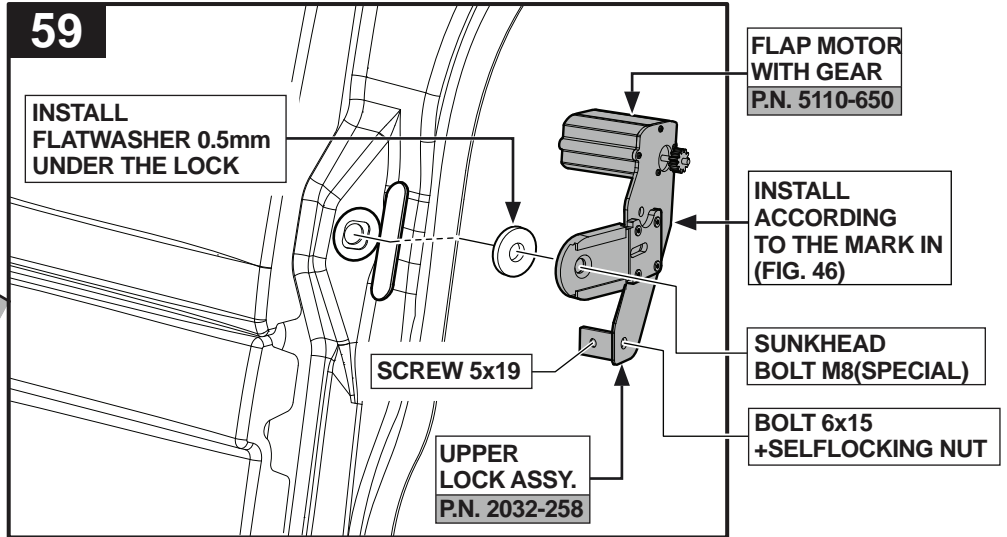


OPTIONAL

**FOR HIGH ROOF ONLY
UPPER LOCK ASSY.
P.N.4276-953**



**AFTER GRINDING
AS MARKED
COVER WITH PAINT
TO PREVENT CORROSION**



59
INSTALL
FLATWASHER 0.5mm
UNDER THE LOCK

FLAP MOTOR
WITH GEAR
P.N. 5110-650

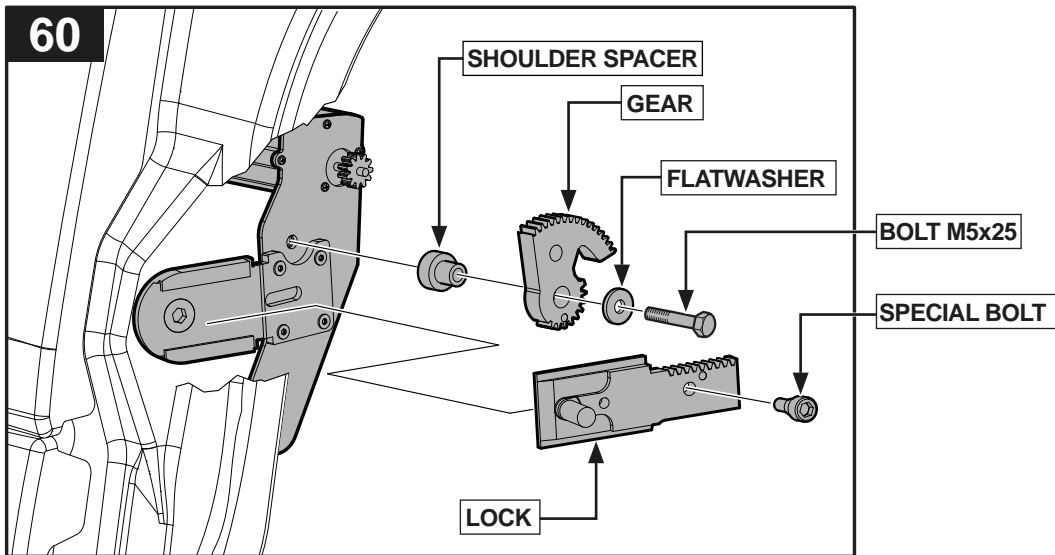
INSTALL
ACCORDING
TO THE MARK IN
(FIG. 46)

SUNKHEAD
BOLT M8(SPECIAL)

BOLT 6x15
+SELFLOCKING NUT

SCREW 5x19

UPPER
LOCK ASSY.
P.N. 2032-258



60

SHOULDER SPACER

GEAR

FLATWASHER

BOLT M5x25

SPECIAL BOLT

LOCK



61

LOCK ASSY. SMALL
PLASTIC COVER
2 SCREWS 5x19
(SELF DRILLING)
P.N. 3801-811

ELECTRIC SLIDING DOOR Extension

ELECTRONIC CONTROL BOX	PAGE 1-4
TROUBLESHOOTING	PAGE 5-7

* ALEX ORIGINAL reserves the rights to make changes in our products without previous notice.



ALEX ORIGINAL



info@alex-original.com



+972-9-8855441



16 Hamelacha St. Netanya



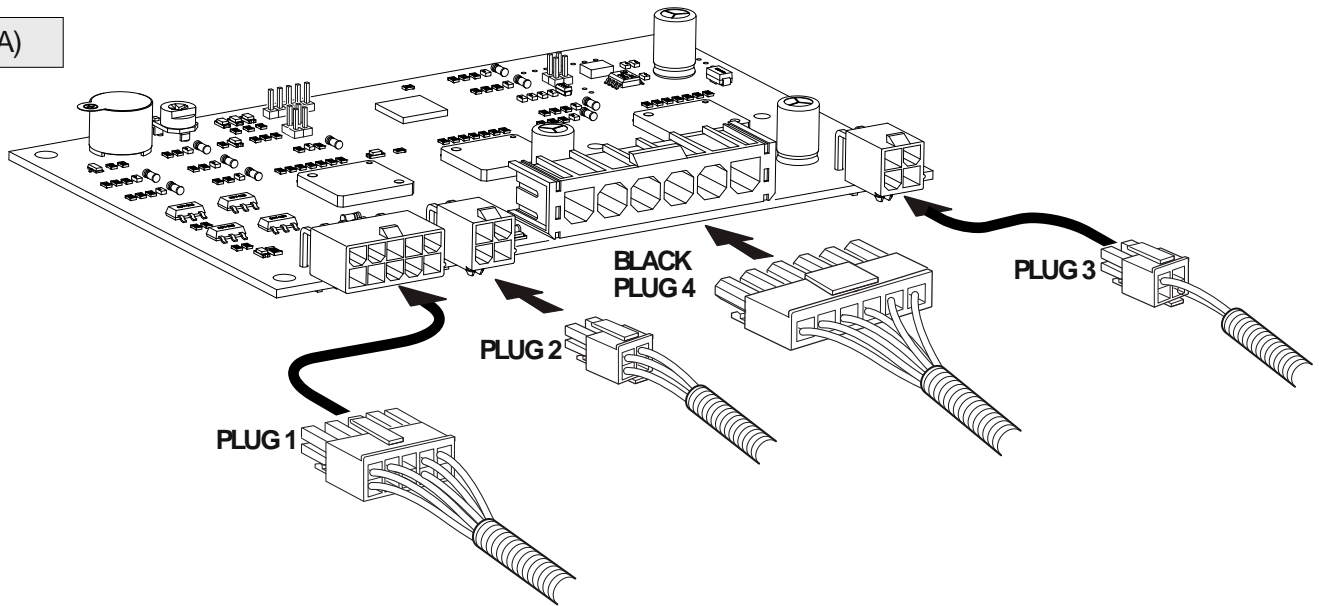
www.alex-original.com

Basic Programming Close / Open Cycle-Once installation completed,

Make sure ignition is **OFF** and the door is **OPEN**, insert all plugs into the Electronic Control Box while leaving the Black plug No 4 for last.

Once Black plug is connected, door will perform a slow movement close and open cycle and should not be interfered with.

(g. A)



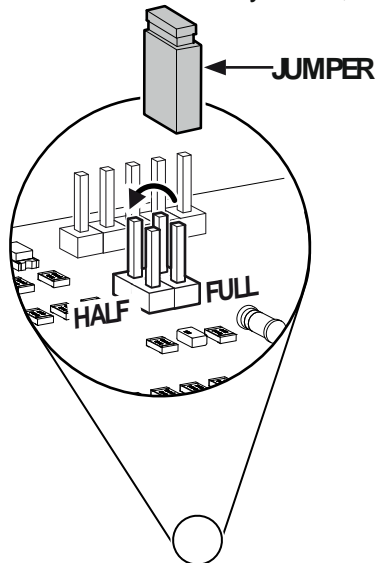
Programming Door Position at half way,

This is handy when door needs to open half way only, when a seat is located near it, for example.

As default, the module is supplied with the jumper inserted into **FULL** position.

For positioning the door in the **HALF** way mode, move Jumper into socket **HALF** position.

(g. B)



Using Original Driver Key (FOB)

No Programming is needed

Using Remote Controls

Programming the Remote Control Located inside the sliding door.

Remove jumper from its position and insert jumper into **J1** on the Electronic Control Box and hold sliding door handle in open position for 3 seconds. **LED 1** will blink for confirmation.

Once it does, unplug the jumper and return it to the open door / **FULL** option in the Electronic Control Box.

Door handle operation:

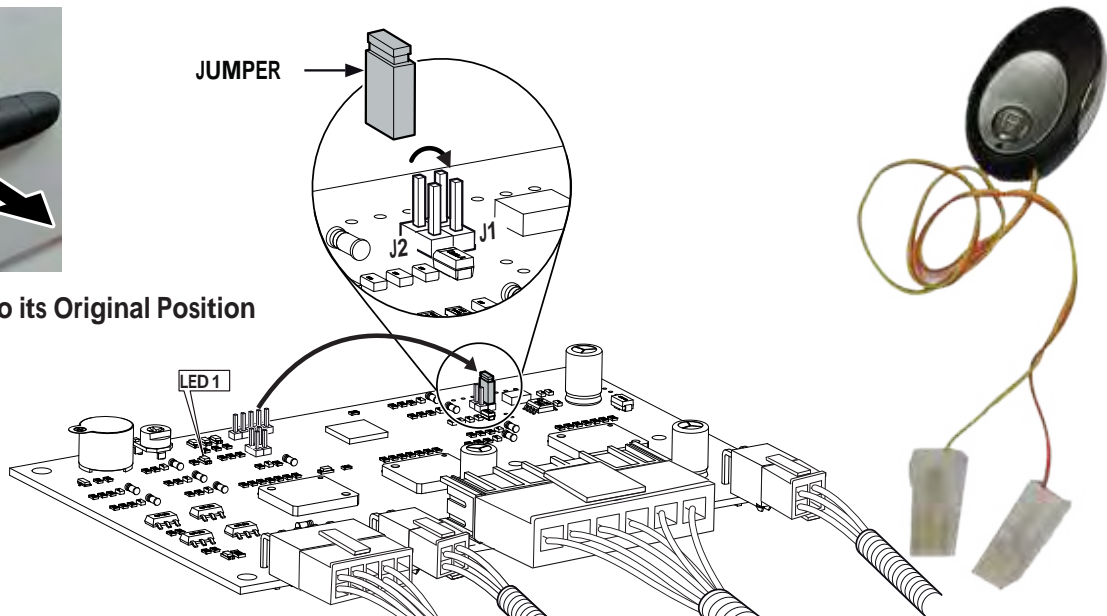
When ignition is on: Door handle operates the same way as driver switch.

When ignition is off: Door handle operates the same way as driver switch until close position.

When the door is in closed position and ignition key is off door handle operation is disabled.

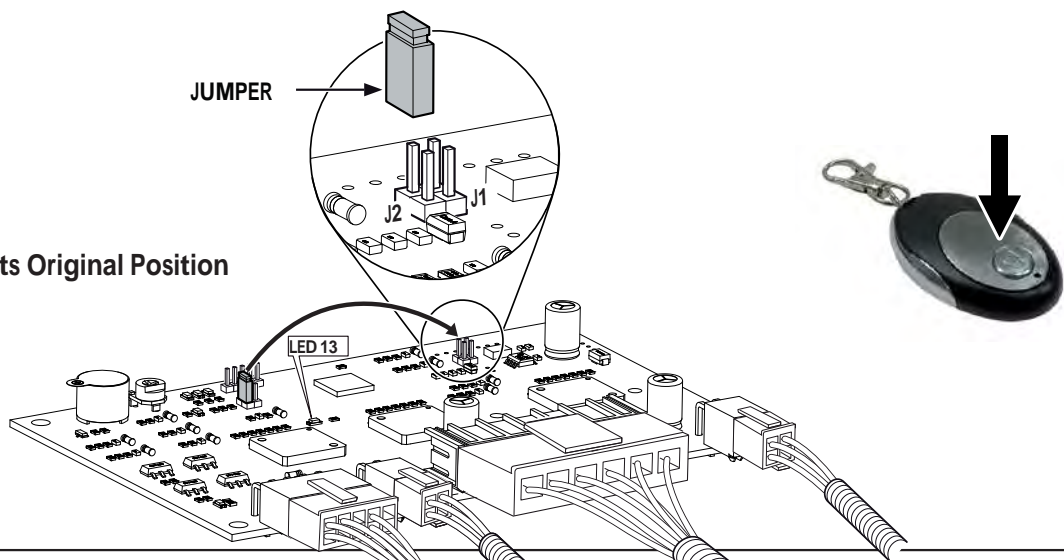


* Return Jumper to its Original Position with in 15 sec.



Programming the Remote Control Door Operation – (In Case Original Driver Key is Not Use). Remove jumper from its position and insert jumper into **J2** socket on the Electronic Control Box and press remote for 3 seconds. **LED 13** will blink for confirmation. Repeat the process with the second remote.

* Return Jumper to its Original Position with in 15 sec.





ELECTRICAL CONNECTIONS (OPTION)

A. Electric step connection output (-) signal

Output (-) signal for operating an ALEX ORIGINAL electric step, pin 7 at the white 10 pin connector (plug 1) to be connected to step Electronic Control Box P.N. 1740-2953.

B. Wheel chair lift extract output (+) signal

When the door is in full opening position, output (+) signal to wheel chair lift operation, is on pin 9 at the white 10 pin connector plug.

C. Wheel chair lift insert door operation input(+) signal

First input (+) signal pin 3 at plug 3 will open the door.
Second input (+) will close the door when wheel chair lift is on close position.

D. Preventing door from closing (-) signal

As long as there is input (-) on pin 2 at the white 4 pin connector (plug 3) door will not close.

BEEPING SOUNDS

Learning Mode:

Fragmented beeping will be heard when door is at its first learning cycle.

Opening Mode:

Fragmented beeping will be heard when door is opening.

Closing Mode:

Fragmented beeping will be heard when door is closing.

Obstacle Detection on closing mode:

Continuous beeping will be heard.
If the sliding door is obstructed during the closing procedure, it opens fully again (for 2 attempts).
On third attempt the electric sliding door moves with increased force.

Reprogramming sliding door Electronic Control Box:

(In case of belt replacement)

1. Turn off ignition key.
2. Disconnect the black connector.
3. Reconnect the black connector.
4. Turn on ignition key.
5. Press and hold driver switch for 10 seconds Within time window of 30 seconds.
6. The door will operate by itself – when the door stops in open position, it is ready for use.

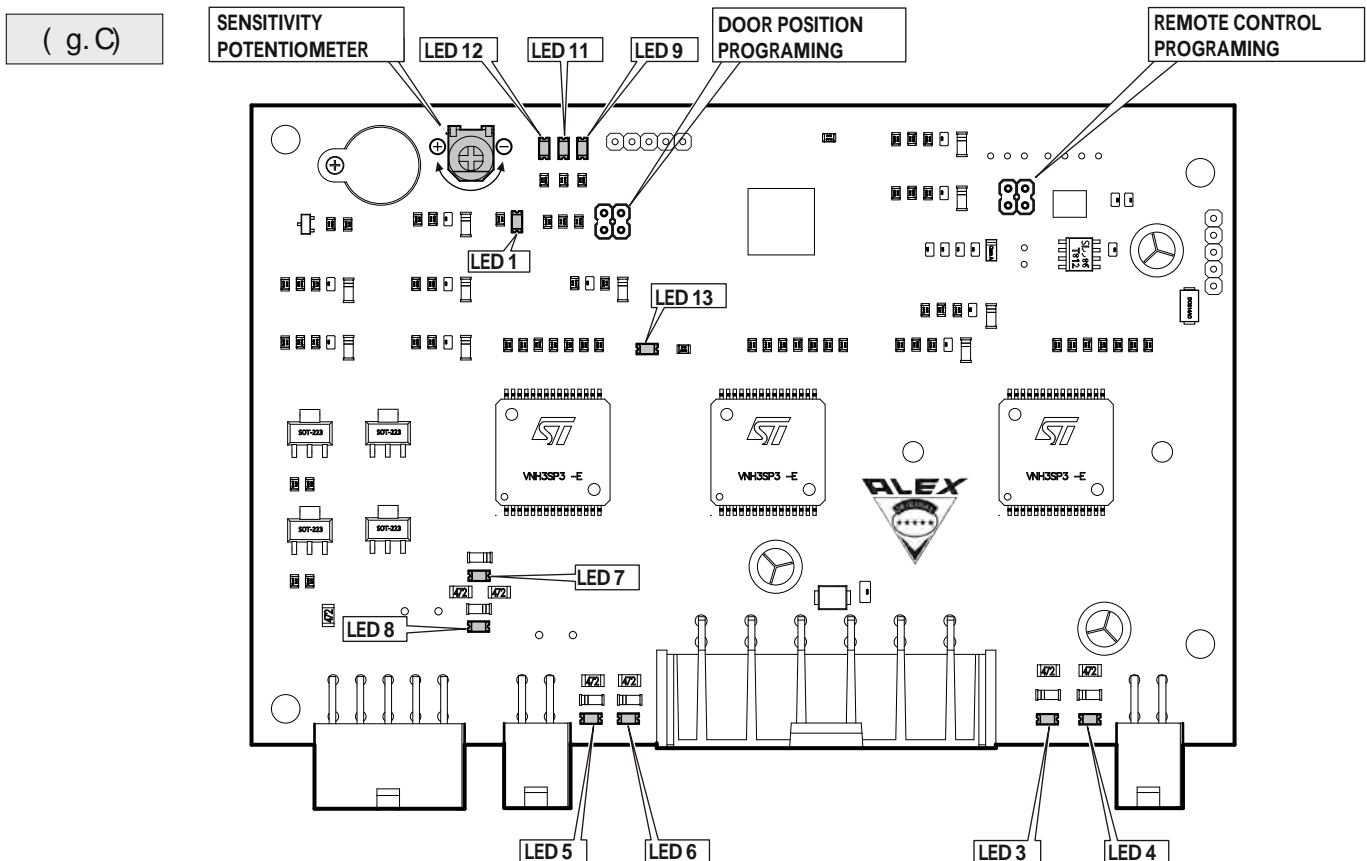
PCB leds color and number for all functions.

LED1 (White) – Remote Control-1	LED8 (Red) – Actuator Closing
LED3 (White) – Motor A Opening	LED9 (Red) – Door Opened Led
LED4 (Red) – Motor A Closing	LED11 (Yellow) – Ignition
LED5 (White) – Motor B Opening	LED12 (Blue) – Driver Command
LED6 (Red) – Motor B Closing	LED13 (Blue) – Remote Control-2
LED7 (White) – Actuator Opening	

Potentiometer adjustment for intensity level of stopping door while closing

To reduce sensitivity of Electric Door turn the Potentiometer clockwise (-).
 To Increase sensitivity turn the Potentiometer counter clockwise (+).

*Adjustment will take effect after turning ignition key off and on.





OPENING MODE

- * Key fob opens only when engine switch is on.
- * Remote control key and door handle operates only when ignition key is on.
- * Door can be closed once while engine switch is off.
- * Continuous press on driver's switch allows door to operate even if there is an obstacle

Door opens half way Verify jumper (fig no. B) on electronic control box is in "full" position. If not, insert it.

Check for an obstacle or person blocking the door, check for dirt in the belt track. Reprogram door electronic control box.

Door starts to open and stops Check drive belt length and adjust it according to installation manual.

Check the cable connecting actuator to original door lock. Micro switch installed in the door should not be pressed when the door handle isn't pulled. Check door is released from lock. If not, Check contacts, release the lock.

Check for an obstacle or person blocking the door, Check for dirt in the belt track. Reprogram door electronic control box.

Door is not moving at constant speed Verify that the encoder cable (located on the electric motor side) is properly connected and not damaged. Repair if required. Close the door and Check if problem is solved. If not, reprogram door electronic control box. Check drive belt length and adjust it according to installation manual. Check original rollers for a smooth operation.

Door stays locked Check the actuator assembly and motor. Check and adjust the actuator assembly cables for opening. Check contacts on door and on B pillar. Verify that children's lock is unlocked. If not set children's switch lock to unlock position.

While opening the door long beep sound

Close the door and re open it. If the problem continues:

Check the encoder connection to the electronic control box. If not, reprogram door's system.

Door doesn't opening / closing by using handle option Check micro switches and wires connections according to the electric diagram. If not, reprogram door's system, remotes controls to the door PCB using Jumper J1.

BEEPING SOUNDS

Learning Mode: Fragmented beeping will be heard when door is at its first learning cycle.

Opening Mode: Fragmented beeping will be heard when door is opening.

Closing Mode: Fragmented beeping will be heard when door is closing.

Obstacle Detection On Closing Mode: Continuous beeping will be heard.

If the sliding door is obstructed during the closing procedure, it opens fully again (for 2 attempts).

On third attempt the electric sliding door moves with increased force.



CLOSING MODE

- * Key fob opens only when engine switch is on.
- * Remote control key and door handle operates only when ignition key is on.
- * Door can be closed once while engine switch is off.
- * Continuous press on driver's switch allows door to operate even if there is an obstacle

Long beep sound While closing the door

Open the door and re close it. If the problem continues:

Verify that the encoder cable is properly connected on both sides and not damaged.

Reprogram door electronic control box

In closing - the door opens by its self with a long beeping

Check if there is an obstacle or person blocking the door, check for dirt in the belt track

Check drive belt length and adjust it according to installation manual.

*** If problem continues, adjust the potentiometer as per installation manual

(turn the potentiometer clock-wise).

Door will close but not lock

Check the main and upper latch operation and adjust if needed.

Check contacts on door and on B pillar (clean).

Check the cable connecting actuator to original door lock.

Door is not moving at constant speed

Verify that the encoder cable is properly connected on both sides and not damaged. Repair as required.

Close and open the door and check if problem is solved. If not, reprogram door electronic control box

Check drive belt length and adjust it according to installation manual.

*** If problem continues, adjust the potentiometer as per installation manual

(turn the potentiometer clock-wise)

BEEPING SOUNDS

Learning Mode: Fragmented beeping will be heard when door is at its first learning cycle.

Opening Mode: Fragmented beeping will be heard when door is opening.

Closing Mode: Fragmented beeping will be heard when door is closing.

Obstacle Detection On Closing Mode: Continuous beeping will be heard.

If the sliding door is obstructed during the closing procedure, it opens fully again (for 2 attempts).

On third attempt the electric sliding door moves with increased force.



- * Key fob opens only when engine switch is on.
- * Remote control key and door handle operates only when ignition key is on.
- * Door can be closed once while engine switch is off.
- * Continuous press on driver's switch allows door to operate even if there is an obstacle

Remote control doesn't operate

Remote control operates only when ignition key is off.

Check remote control's batteries. Replace if needed.

Verify that the remote is programmed to the electric control box and reprogram if needed.

Check if central locking signal wire is connected to electronic control box pin 4 plug 3.

For vehicles with original remote control (as Sprinter / Crafter / Transit / Ducato, etc)

Door handle operation Door handle operates only when ignition key is on.

Micro switch installed in door should not be pressed when the door handle isn't pulled.

Check micro switch remote control's batteries, replace if needed.

Reprogram door handle remote control to electronic control box.

Dash button doesn't operate

Driver button operates only when ignition key is on.

Check connections after ignition.

Check if the Blue LED in the driver button is on when the door is closed and flashing when the door is open.

While pressing dash button Check output single on the button white wire to electronic control box.

Door does not work at all from dash switch and the remote control

Check fuse of the door system.

Check the battery voltage on the electronic control box main supply plug.

Opening Door while vehicle is on downhill position and door is slowing down slowly

Check if there is an electrical brake when the door is fully open. if not switch remote control's batteries, replace if needed.

If not, reprogram door's system door handle remote control to electronic control box.

VSS signal = door is not closing automatically when the vehicle starts moving on the road

Check if the VSS signal option is connected correctly to the original cantus / wires of the vehicle.

if there is no connection to the original speed of the vehicle, please use ALEX ORIGINAL VSS print P.N. 1740-001.

Others

Check the belt for damage.

Check the belt's length.

If needed, readjust the belt for 6-7 teeth (as per installation manual).

BEEPING SOUNDS

Learning Mode: Fragmented beeping will be heard when door is at its first learning cycle.

Opening Mode: Fragmented beeping will be heard when door is opening.

Closing Mode: Fragmented beeping will be heard when door is closing.

Obstacle Detection On Closing Mode: Continuous beeping will be heard.

If the sliding door is obstructed during the closing procedure, it opens fully again (for 2 attempts).

On third attempt the electric sliding door moves with increased force.

ADDRESS

ALEX ORIGINAL
16 Hamelacha St., P.O.BOX 8521,
Netanya. 4250551 Israel

CONTACT

(Phone) +972-9-8855441
(Fax) +972-9-8855442

ONLINE

(E-mail) info@alex-original.com
(Web) www.alex-original.com